

# TASMANIAN STATISTICAL INDICATORS

EMBARGO: 11:30AM (CANBERRA TIME) TUES 10 APR 2001

## CONTENTS

	<i>page</i>
Notes .....	2
Main features .....	3
List of tables .....	8
SUBJECT AREAS	
<b>1</b> Population and demography .....	9
<b>2</b> Labour force .....	10
<b>3</b> Wages and prices .....	18
<b>4</b> Production .....	24
<b>5</b> Primary industry .....	25
<b>6</b> Building .....	29
<b>7</b> Finance .....	30
<b>8</b> Tourism .....	32
<b>9</b> Transport .....	34
<b>10</b> Retail trade .....	35
<b>11</b> Overseas trade .....	36
<b>12</b> Australia and State comparisons .....	38
<b>13</b> Tasmanian Statistical Divisions comparisons .....	40
ADDITIONAL INFORMATION	
Map: Tasmanian Statistical Divisions .....	42

- For further information about these and related statistics, contact the National Information Service on 1300 135 070 or Jackie Saarinen on Hobart 03 6222 5812.

## NOTES

### FORTHCOMING ISSUES

<i>ISSUE</i>	<i>RELEASE DATE</i>
May 2001	8 May 2001
June 2001	8 June 2001

### INTRODUCTION

1 This publication contains latest figures for a comprehensive range of economic indicators. Statistics shown in this publication are the latest available at the date of preparation and may be subject to revision in subsequent issues. Reference should therefore always be made to the latest issue or to the statistical publication on the specific subject.

### SEASONAL ADJUSTMENT AND TREND ESTIMATION

2 Seasonal adjustment is a means of removing the estimated effects of normal seasonal variation from the series so that the effects of other influences on the series can be more clearly recognised. Seasonal adjustment does not aim to remove the irregular or non-seasonal influences which may be present in any particular month. This means that month-to-month movements of the seasonally adjusted estimates may not be reliable indicators of trend behaviour.

3 The smoothing of seasonally adjusted series reduces the impact of the irregular components of the seasonally adjusted series and creates trend estimates. These trend estimates are derived by applying a 13-term Henderson-weighted moving average to all months except the last six. The last six monthly trend estimates are obtained by applying surrogates of the Henderson average to the seasonally adjusted series.

4 While this smoothing technique enables estimates to be produced for the latest month, it does result in revisions to the most recent months as additional observations become available. Generally, subsequent revisions become smaller and after 3 months have a negligible impact on the series.

5 ABS statistical series are being impacted by varying degrees as a result of The New Tax System (TNTS), introduced in Australia from 1 July 2000. TNTS includes the removal of Wholesale Sales Tax and the introduction of a Goods and Service Tax (GST), and as a result, a number of ABS data series will reflect significant and subsequent impacts. Further information can be found in *ABS Statistics and The New Tax System* (Cat. no. 1358.0).

### SYMBOLS AND OTHER USAGES

n.a.	not available
n.p.	not available for separate publication (but included in totals where applicable)
n.y.a.	not yet available
..	not applicable
—	nil or rounded to zero
p	preliminary—figure or series subject to revision
r	figure or series revised since previous issue

Stevan R. Matheson  
Regional Director, Tasmania

## MAIN FEATURES

### THE LABOUR FORCE

Trend estimates There were an estimated 221,800 persons (based on *trend* estimates) in the labour force in February 2001 and an estimated 372,000 civilian Tasmanians aged 15 years or more, yielding a labour force participation rate of 59.6%. This compares with 59.0% in February 2000. The Australian labour force participation rate for February 2001 was 63.5%. This compares with 63.4% in February 2000 (see table 39 and *Labour Force, Australia, Preliminary* (Cat. no. 6202.0)).

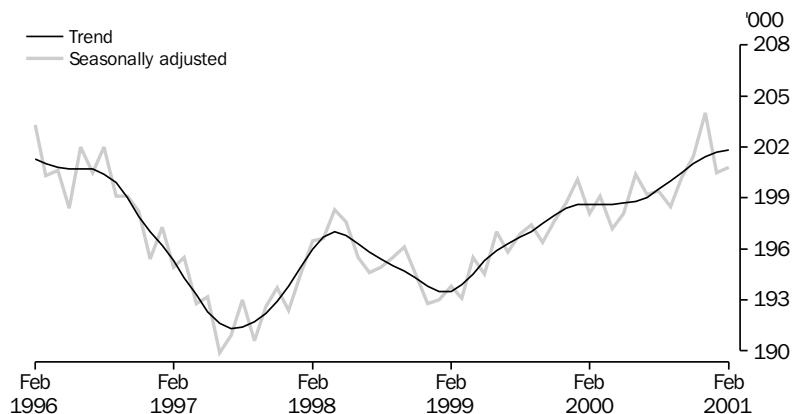
For Tasmanian males, the *trend* estimate of the participation rate was 69.0%, compared with 67.3% in February 2000. For Tasmanian females, the *trend* estimate of the participation rate was 50.8%, compared with 51.2% in February 2000 (see table 3).

### EMPLOYMENT

State comparisons There was an increase of 1.6% in Tasmania's employment over the 12 months to February 2001. Victoria recorded an increase of 3.8%; Western Australia, 1.6%; Queensland, 1.0%; and New South Wales, 0.5%; while South Australia recorded a decrease of 0.5%. The increase in Australia's employment over the same period was 1.5% (see table 39 and *Labour Force, Australia, Preliminary* (Cat. no. 6202.0)).

Trend estimates

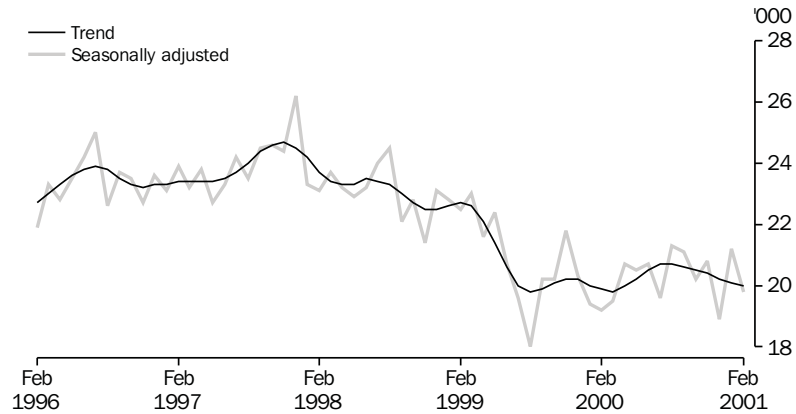
EMPLOYMENT, Tasmania



### UNEMPLOYMENT

Trend estimates The *trend* estimate of the number of unemployed persons in Tasmania for February 2001 was 20,000. This compares with 19,900 in February 2000. The *trend* estimate of the unemployment rate of 9.0% in February 2001 compares with 9.1% in February 2000. The Australian *trend* estimate of the unemployment rate of 6.8% in February 2001 was the same as in February 2000 (see table 3 and 39, and *Labour Force, Australia, Preliminary* (Cat. no. 6202.0)).

## UNEMPLOYMENT, Tasmania



## LIVESTOCK SLAUGHTERING

### Trend estimates

In January 2001, the *trend* estimate for Tasmania for the number of cattle and calves slaughtered increased by 4.5% over the previous month. Over the same period, the estimate for the number of sheep and lambs slaughtered fell by 5.5% while the estimate for the number of pigs slaughtered fell by 1.3%.

The *trend* estimate for the slaughtering of cattle and calves was 20,800 in January 2001. This was down by 11.0% on the number for January 2000, and down 5.4% on the number for January 1999.

The *trend* estimate for the number of sheep and lambs slaughtered was 59,900. This was down by 29.0% on the number for January 2000, and down 21.9% on the number for January 1999.

The *trend* estimate of 4,530 pigs slaughtered in January 2001 was 20.1% less than for January 2000 and 29.6% less than the *trend* estimate for January 1999 (see table 21).

## BUILDING APPROVALS

### Original terms

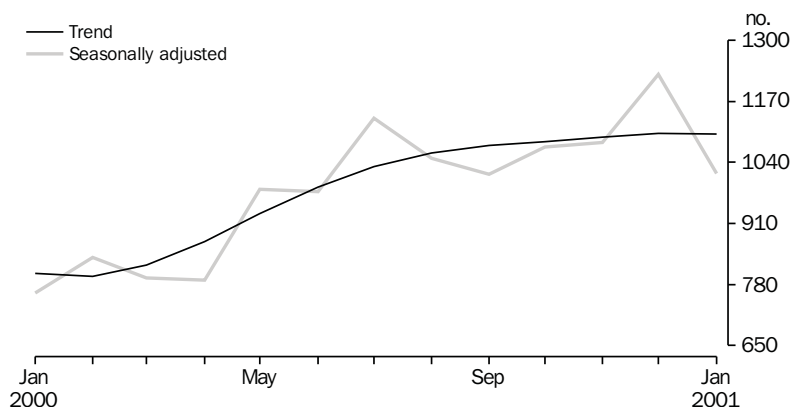
There were 93 dwelling units approved during January 2001, including 89 new houses. The number of dwelling units approved during January 2001 was 63.2% above the December 2000 figure of 57, and 48.3% below the January 2000 figure of 180. The number of dwelling units approved in the 12 months to January 2001 (1,467) fell 10.7% from those approved in the 12 months to January 2000 (1,643).

At current prices, the value of total building was \$29.4 million in January 2001, 33.6% above the December 2000 figure of \$22.0 million and 7.8% below the January 2000 figure of \$31.9 million. Residential building contributed \$12.9 million and non-residential building \$16.5 million in January 2001. The main contributor to non-residential building was Educational building (\$13.4 million) (see table 27 and *Building Approvals, Australia* (Cat. no. 8731.0)).

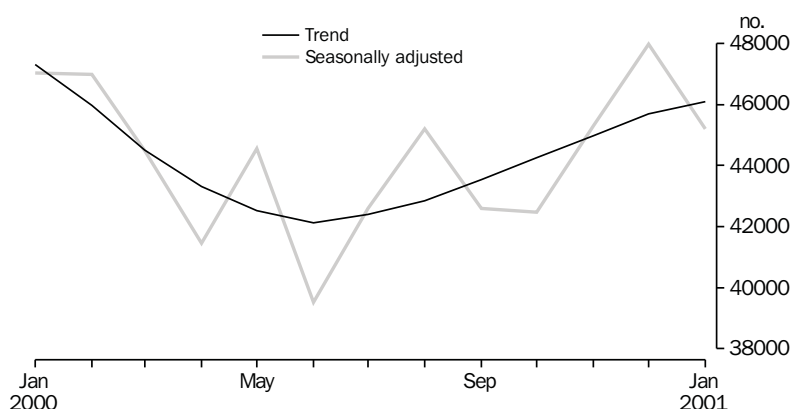
## HOUSING FINANCE

The latest trend series for the number of housing finance commitments in Tasmania shows a slight decrease of 0.1% between December 2000 and January 2001, the first fall since February 2000. However, the trend series shows an overall increase of 37.1% between January 2000 and January 2001. The national trend series shows a decrease of 2.6% for the year January 2000 to January 2001, with an increase of 0.9% between December 2000 and January 2001.

HOUSING FINANCE, TASMANIA, Number of dwellings



HOUSING FINANCE, AUSTRALIA, Number of dwellings



The latest trend series for the total value of commitments for Tasmania has decreased by 2.7% between December 2000 and January 2001, a continuing occurrence since August 2000. However, the trend series for the year between January 2000 to January 2001 shows an increase of 10.6%. The national trend series shows the value of commitments having increased by 2.2% between December 2000 and January 2001, however a decline of 8.0% is shown for the 12 months from January 2000 to January 2001 (see table 28 and *Housing Finance for Owner Occupation, Australia* (Cat. no. 5609.0)).

## NEW MOTOR VEHICLE REGISTRATIONS

Original terms     There were 1041 new motor vehicles (excluding motorcycles) registered in Tasmania during January 2001. This was 48.8% below the 2,035 registered in December 2000 and 9.3% above the January 2000 figure of 952. Of the new motor vehicles (excluding motorcycles) registered in January 2001, there were 9 vehicles registered by vehicle rental businesses, compared with 884 in December 2000 and 59 in January 2000 (see table 34).

## RETAIL

Trend estimates     In *trend* terms, the estimate of retail turnover in Australia for January 2001 was \$12,848.2 million, 5.5% above the figure recorded in January 2000. In *trend* terms, the estimate of retail turnover in Tasmania for January 2001 was \$283.9 million, 4.8% above the figure recorded in January 2000. In Tasmania, the *trend estimate* increased for the sixth month in a row; between December 2000 and January 2001 the largest percentage increases were recorded in the Recreational good retailing and the Hospitality and services industries (see table 35 and *Retail Trade, Australia* (Cat. no. 8501.0)).

## OVERSEAS TRADE

The value of Tasmania's exports for the month of January 2001 was \$191 million, a decrease of 13% over the month of December 2000. Australia's exports for January 2001 totalled \$8,319 million, a decrease of 19% over the December 2000 figure.

Tasmania's major export destinations for the month of January 2001 were Japan (\$44.9 million), Hong Kong (\$28.2 million) and Taiwan (\$21.2 million). Major commodity groups exported for the month were non-ferrous metals (\$71.2 million), fish, crustaceans and molluses (\$17.3 million) and metallic ores and metal scrap (\$12.9 million).



## LIST OF TABLES

<b>1</b>	Population	9
<b>2</b>	Births, deaths and marriages	9
<b>3</b>	Labour force status	10
<b>4</b>	Labour force status by region, males	11
<b>5</b>	Labour force status by region, females	12
<b>6</b>	Labour force status by region, persons	13
<b>7</b>	Teenage labour market	14
<b>8</b>	All employed persons by occupation	15
<b>9</b>	Wage and salary earners, sector and industry	16
<b>10</b>	Average hours worked	16
<b>11</b>	Job vacancies	17
<b>12</b>	Industrial disputes	17
<b>13</b>	Average weekly earnings of employees	18
<b>14</b>	Indexes of total hourly rates of pay	19
<b>15</b>	Summary of annual movements in wages and prices	20
<b>16</b>	House price index numbers	20
<b>17</b>	Consumer price index, Hobart and eight capital cities combined	21
<b>18</b>	Price index of materials used in building other than house building, Hobart	22
<b>19</b>	Production of selected commodities	24
<b>20</b>	Livestock slaughtering	25
<b>21</b>	Livestock slaughtering: seasonally adjusted and trend	25
<b>22</b>	Meat production	26
<b>23</b>	Principal mineral concentrates produced	26
<b>24</b>	Sawmills and plywood mills, logs delivered and timber produced	27
<b>25</b>	Chipping and grinding of wood	28
<b>26</b>	Logs delivered for milling or chipping	28
<b>27</b>	Building approvals	29
<b>28</b>	Secured housing commitments	30
<b>29</b>	Private new capital expenditure by type of asset	30
<b>30</b>	Banking statistics	31
<b>31</b>	Accommodation establishments	32
<b>32</b>	National Parks, person entries	33
<b>33</b>	Tracks in National Parks, walker registrations	33
<b>34</b>	Registrations of new motor vehicles	34
<b>35</b>	Turnover of retail establishments at current prices	35
<b>36</b>	Value of overseas trade—Tasmania and Australia	36
<b>37</b>	Merchandise exports by selected countries and country groups	36
<b>38</b>	Merchandise exports by selected commodity groups	37
<b>39</b>	Major Statistical Indicators—Australia and State comparisons	38
<b>40</b>	Major Statistical Indicators—Tasmanian Statistical Divisions	40



# 1

## POPULATION

	<i>Estimated resident population</i>	<i>Natural increase(a)</i>	<i>Net estimated migration gain</i>	<i>Total population growth</i>	<i>Annual growth rate(b)</i>
	'000	'000	'000	'000	%
<b>1997-98</b>	471.7	2.1	-3.9	-1.8	-0.38
<b>1998-99</b>	470.8	2.7	-3.6	-0.9	-0.19
<b>1999-2000</b>	470.4	2.2	-2.6	-0.4	-0.09
<b>1998</b>					
June qtr	471.7	0.5	-1.1	-0.6	-0.38
September qtr	471.6	0.6	-0.7	-0.1	-0.30
December qtr	471.6	0.7	-0.7	-0.1	-0.23
<b>1999</b>					
March qtr	471.1	0.7	-1.2	-0.5	-0.26
June qtr	470.8	0.7	-1.0	-0.3	-0.19
September qtr p	470.8	0.5	-0.5	0	-0.17
December qtr p	470.7	0.5	-0.5	-0.1	-0.17
<b>2000</b>					
March qtr p	470.6	0.6	-0.8	-0.1	-0.09
June qtr p	470.4	0.5	-0.8	-0.3	-0.09

(a) Excess of live births registered over deaths registered (based on usual State of residence).

(b) Percentage growth from same quarter in previous year.

Source: Australian Demographic Statistics (Cat. no. 3101.0).

# 2

## BIRTHS, DEATHS AND MARRIAGES(a)

	<i>Births</i>		<i>Deaths</i>		<i>Infant mortality(b)</i>		<i>Marriages</i>	
	<i>no.</i>	<i>rate(c)</i>	<i>no.</i>	<i>rate(d)</i>	<i>no.</i>	<i>rate(e)</i>	<i>no.</i>	<i>rate(f)</i>
<b>1997-98</b>	5 870	1.76	3 766	6.6	38	6.5	2 782	5.9
<b>1998-99</b>	6 384	1.95	3 726	6.2	41	6.4	2 483	r5.3
<b>1999-2000</b>	5 844	1.82	3 683	6.2	40	6.8	2 648	5.6
<b>1998</b>								
June qtr	1 420	..	921	..	11	7.8	810	..
September qtr	1 636	..	1 031	..	9	5.5	331	..
December qtr	1 567	..	907	..	8	5.1	658	..
<b>1999</b>								
March qtr	1 545	..	865	..	9	5.8	858	..
June qtr	1 636	..	923	..	15	9.2	636	..
September qtr p	1 555	..	1 035	..	16	10.3	327	..
December qtr p	1 367	..	905	..	9	6.6	678	..
<b>2000</b>								
March qtr p	1 512	..	864	..	7	4.6	910	..
June qtr p	1 410	..	879	..	8	5.7	733	..

(a) Usual residents of Tasmania.

(b) Deaths of children under one year of age.

(c) Total fertility rate. The sum of age specific fertility rates (live births at each age of a mother per female population of that age). It represents the number of children a woman would bear during her lifetime if she experienced age-specific fertility rates at each age of her reproductive life.

(d) Standardised death rate. The overall death rate, per 1,000 persons, that would have prevailed in a standard population if it had experienced at each age the death rates of the population being studied. The standard population used in these calculations is all persons in the 1991 Australian population.

(e) Rate per 1,000 live births.

(f) Crude marriage rate is the number of marriages registered during the financial year, per 1,000 estimated resident population at 31 December of that year.

Source: Australian Demographic Statistics (Cat. no. 3101.0).

## 3

## LABOUR FORCE STATUS(a) — SEASONALLY ADJUSTED AND TREND

	Seasonally adjusted series(b)				Trend series(b)			
	Employed	Unemployed	Unemployment rate	Participation rate	Employed	Unemployed	Unemployment rate	Participation rate
	'000	'000	%	%	'000	'000	%	%
MALES								
<b>2000</b>								
February	109.8	11.1	9.2	66.9	109.6	11.7	9.6	67.3
March	109.6	11.2	9.2	67.0	109.5	11.5	9.5	67.2
April	108.9	11.8	9.8	67.0	109.5	11.7	9.7	67.2
May	109.4	12.0	9.9	67.3	109.6	12.0	9.9	67.4
June	110.1	13.4	10.9	68.4	109.8	12.4	10.1	67.7
July	110.4	11.7	9.5	67.7	110.1	12.6	10.3	68.0
August	110.5	13.0	10.6	68.4	110.4	12.7	10.3	68.2
September	110.6	12.9	10.4	68.4	110.9	12.7	10.3	68.4
October	110.5	12.7	10.3	68.2	111.2	12.6	10.2	68.5
November	111.9	12.6	10.2	68.9	111.6	12.6	10.1	68.7
December	112.8	12.0	9.6	69.0	111.8	12.6	10.1	68.8
<b>2001</b>								
January	112.3	12.7	10.2	69.1	112.0	12.7	10.2	68.9
February	110.9	13.3	10.7	68.7	112.0	12.7	10.2	69.0
FEMALES								
<b>2000</b>								
February	88.2	8.1	8.4	50.7	89.0	8.2	8.5	51.2
March	89.5	8.3	8.5	51.5	89.1	8.3	8.5	51.2
April	88.2	8.9	9.1	51.0	89.1	8.3	8.5	51.2
May	88.8	8.5	8.7	51.1	89.0	8.2	8.5	51.1
June	90.3	7.3	7.5	51.3	89.0	8.1	8.4	51.0
July	88.8	7.9	8.2	50.8	89.0	8.0	8.3	50.9
August	88.9	8.3	8.5	51.0	89.0	8.0	8.2	50.9
September	87.9	8.2	8.6	50.4	89.1	7.9	8.2	50.9
October	89.7	7.6	7.8	51.0	89.3	7.9	8.1	50.9
November	89.6	8.1	8.3	51.2	89.5	7.8	8.1	51.0
December	91.2	6.9	7.0	51.4	89.6	7.6	8.0	50.9
<b>2001</b>								
January	88.2	8.5	8.8	50.6	89.7	7.4	7.6	50.9
February	89.9	6.5	6.8	50.4	89.8	7.3	7.5	50.8
TOTAL								
<b>2000</b>								
February	198.1	19.2	8.8	58.7	198.6	19.9	9.1	59.0
March	199.1	19.5	8.9	59.0	198.6	19.8	9.1	59.0
April	197.2	20.7	9.5	58.8	198.6	20.0	9.1	59.0
May	198.1	20.5	9.4	59.0	198.7	20.2	9.2	59.1
June	200.4	20.7	9.4	59.6	198.8	20.5	9.4	59.1
July	199.2	19.6	9.0	59.0	199.0	20.7	9.4	59.2
August	199.4	21.3	9.7	59.5	199.5	20.7	9.4	59.3
September	198.5	21.1	9.6	59.2	200.0	20.6	9.3	59.4
October	200.2	20.2	9.2	59.3	200.5	20.5	9.3	59.5
November	201.4	20.8	9.3	59.8	201.0	20.4	9.2	59.6
December	204.0	18.9	8.5	59.9	201.4	20.2	9.1	59.6
<b>2001</b>								
January	200.5	21.2	9.6	59.6	201.7	20.1	9.1	59.6
February	200.8	19.8	9.0	59.3	201.8	20.0	9.0	59.6

(a) For explanation of terms and concepts, refer to Labour Force, Australia, Preliminary (Cat. no. 6202.0).

(b) Seasonal factors are reviewed annually to take account of each additional year's data. The results of the review are used to compile revised seasonally adjusted and trend estimates each February. Trend estimates for the most recent months are also revised each month; see Notes on page 2.

Source: Labour Force, Australia, Preliminary (Cat. no. 6202.0).

## 4

## LABOUR FORCE STATUS BY REGION — MALES(a)(b)

	Total employed	Total unemployed	Unemployment rate	Participation rate
	'000	'000	%	%
HOBART AND SOUTHERN STATISTICAL DIVISIONS				
<b>1998</b>				
February	53.0	5.8	9.9	69.1
<b>2000</b>				
February	51.9	5.4	9.4	65.6
December	53.4	6.5	10.9	68.5
<b>2001</b>				
January	52.3	6.8	11.4	67.9
February	51.3	7.2	12.3	66.8
NORTHERN STATISTICAL DIVISION				
<b>1998</b>				
February	31.5	5.0	13.7	72.7
<b>2000</b>				
February	31.6	2.9	8.5	67.2
December	37.1	2.8	6.9	74.1
<b>2001</b>				
January	35.9	3.2	8.3	72.6
February	36.8	3.4	8.4	72.9
MERSEY-LYELL STATISTICAL DIVISION				
<b>1998</b>				
February	27.4	4.7	14.8	71.2
<b>2000</b>				
February	26.4	3.3	11.0	71.4
December	24.4	3.2	11.5	69.6
<b>2001</b>				
January	23.4	4.0	14.5	68.4
February	22.9	3.3	12.7	68.5
TASMANIA				
<b>1998</b>				
February	111.9	15.5	12.2	70.6
<b>2000</b>				
February	109.9	11.5	9.5	67.4
December	114.8	12.4	9.8	70.4
<b>2001</b>				
January	111.5	14.0	11.1	69.4
February	111.0	13.9	11.1	69.0

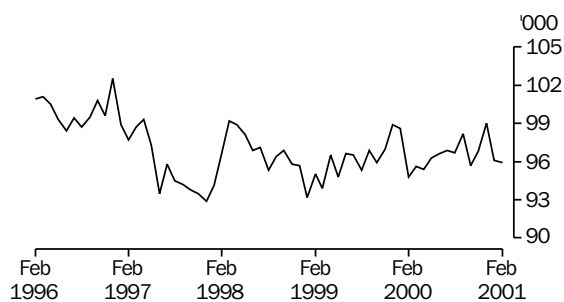
(a) For explanation of terms and concepts, refer to Labour Force, Australia (Cat. no. 6203.0).

(b) Data in this table are original series, i.e. they are not part of a seasonally adjusted or a trend series. Accordingly, care should be exercised when using these data.

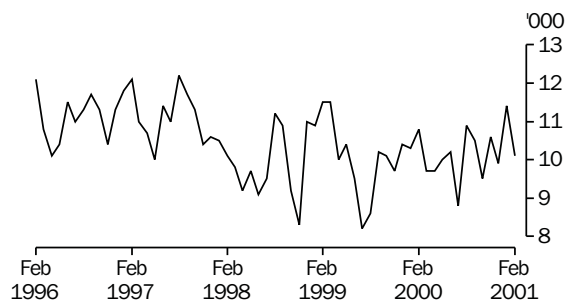
Source: Labour Force, Selected Summary Tables, Australia (Cat. no. 6291.0.40.001).

## Hobart and Southern Statistical Divisions — Persons (see table 6)

## EMPLOYMENT



## UNEMPLOYMENT



# 5

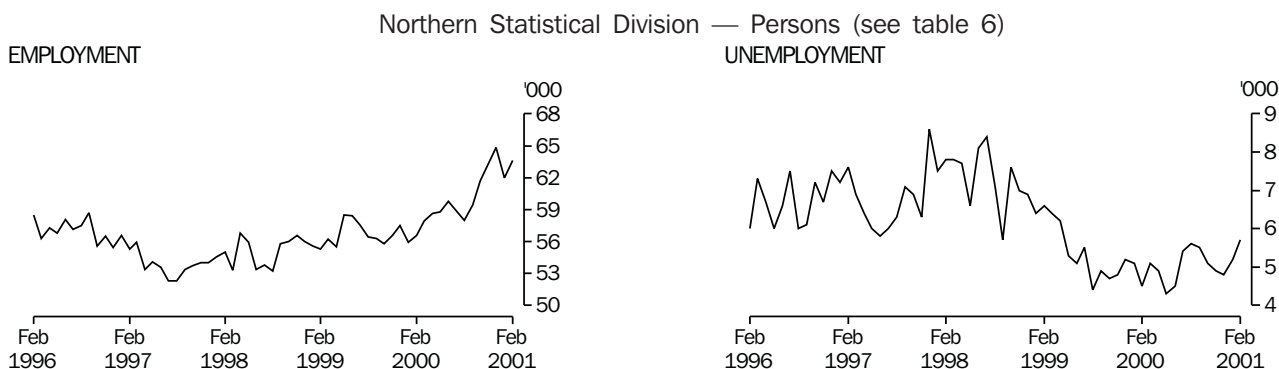
## LABOUR FORCE STATUS BY REGION — FEMALES(a)(b)

	<i>Total employed</i>	<i>Total unemployed</i>	<i>Unemployment rate</i>	<i>Participation rate</i>
	'000	'000	%	%
<b>HOBART AND SOUTHERN STATISTICAL DIVISIONS</b>				
<b>1998</b>				
February	43.6	4.3	9.0	52.9
<b>2000</b>				
February	42.9	5.5	11.3	51.3
December	45.7	3.3	6.8	52.6
<b>2001</b>				
January	43.8	4.6	9.5	51.8
February	44.6	2.9	6.1	51.0
<b>NORTHERN STATISTICAL DIVISION</b>				
<b>1998</b>				
February	23.5	2.8	10.5	48.5
<b>2000</b>				
February	25.0	1.6	6.1	48.5
December	27.7	2.0	6.8	53.2
<b>2001</b>				
January	26.0	2.0	7.0	50.6
February	26.8	2.3	8.0	51.9
<b>MERSEY-LYELL STATISTICAL DIVISION</b>				
<b>1998</b>				
February	16.9	1.9	9.9	42.2
<b>2000</b>				
February	19.6	1.6	7.3	51.8
December	18.8	1.7	8.2	49.0
<b>2001</b>				
January	16.9	2.3	11.8	45.3
February	17.7	1.7	8.7	46.6
<b>TASMANIA</b>				
<b>1998</b>				
February	84.0	8.9	9.6	49.1
<b>2000</b>				
February	87.5	8.6	9.0	50.6
December	92.2	7.0	7.1	52.0
<b>2001</b>				
January	86.8	8.8	9.2	50.0
February	89.2	6.9	7.2	50.3

(a) For explanation of terms and concepts, refer to Labour Force, Australia (Cat. no. 6203.0).

(b) Data in this table are original series, i.e. they are not part of a seasonally adjusted or a trend series. Accordingly, care should be exercised when using these data.

Source: Labour Force, Selected Summary Tables, Australia (Cat. no. 6291.0.40.001).



## 6

## LABOUR FORCE STATUS BY REGION — PERSONS(a)(b)

	Total employed	Total unemployed	Unemployment rate	Participation rate
	'000	'000	%	%
HOBART AND SOUTHERN STATISTICAL DIVISIONS				
<b>1998</b>				
February	96.6	10.1	9.5	60.7
<b>2000</b>				
February	94.8	10.8	10.2	58.2
December	99.0	9.9	9.1	60.3
<b>2001</b>				
January	96.1	11.4	10.6	59.5
February	95.9	10.1	9.5	58.6
NORTHERN STATISTICAL DIVISION				
<b>1998</b>				
February	55.0	7.8	12.4	60.2
<b>2000</b>				
February	56.6	4.5	7.4	57.6
December	64.8	4.8	6.9	63.5
<b>2001</b>				
January	62.0	5.2	7.7	61.5
February	63.6	5.7	8.2	62.3
MERSEY-LYELL STATISTICAL DIVISION				
<b>1998</b>				
February	44.3	6.6	13.0	56.8
<b>2000</b>				
February	46.0	4.8	9.5	61.7
December	43.2	4.9	10.1	59.0
<b>2001</b>				
January	40.2	6.2	13.4	56.5
February	40.6	5.0	11.0	57.1
TASMANIA				
<b>1998</b>				
February	195.9	24.5	11.1	59.6
<b>2000</b>				
February	197.5	20.2	9.3	58.8
December	207.0	19.5	8.6	60.9
<b>2001</b>				
January	198.3	22.8	10.3	59.4
February	200.1	20.8	9.4	59.4

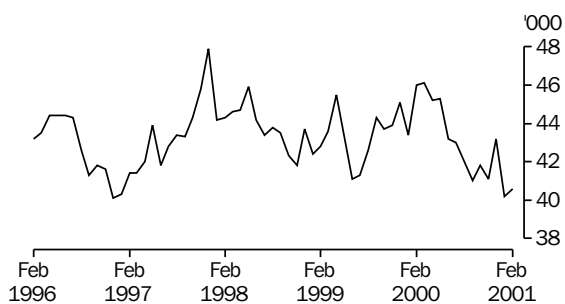
(a) For explanation of terms and concepts, refer to Labour Force, Australia (Cat. no. 6203.0).

(b) Data in this table are original series, i.e. they are not part of a seasonally adjusted or a trend series. Accordingly, care should be exercised when using these data.

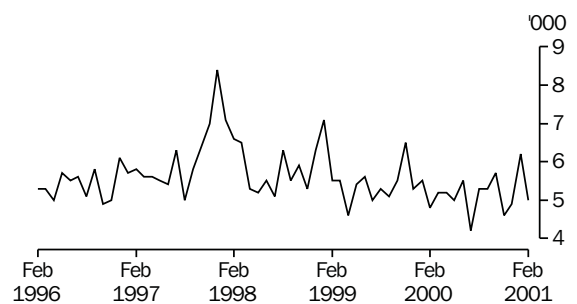
Source: Labour Force, Selected Summary Tables, Australia (Cat. no. 6291.0.40.001).

## Mersey-Lyell Statistical Division — Persons (see table 6)

## EMPLOYMENT



## UNEMPLOYMENT



## 7

## TEENAGE LABOUR MARKET(a)

	<i>Employed</i>		<i>Unemployed</i>		<i>Labour force</i>	<i>Not in labour force</i>	<i>Civilian population aged 15–19</i>	<i>Unemployment rate</i>	<i>Unemployment population ratio</i>	<i>Participation rate</i>
	<i>Full time</i>	<i>Total</i>	<i>Looking for full time work</i>	<i>Total</i>						
	'000	'000	'000	'000						
<b>ATTENDING NEITHER A SCHOOL NOR A TERTIARY INSTITUTION FULL TIME</b>										
<b>1998</b>										
February	6.0	9.1	2.8	2.9	12.0	1.6	13.6	24.4	21.6	88.3
<b>2000</b>										
February	5.4	7.3	2.4	2.5	9.8	1.8	11.6	25.1	21.2	84.6
December	6.3	11.1	2.4	2.5	13.6	1.9	15.5	18.6	16.4	88.0
<b>2001</b>										
January	6.5	10.0	1.5	1.6	11.6	1.6	13.1	13.5	11.9	87.9
February	6.4	8.9	1.8	2.0	10.9	1.0	11.9	18.5	16.9	91.7
<b>ATTENDING SCHOOL OR A TERTIARY INSTITUTION FULL TIME</b>										
<b>1998</b>										
February	0.3	6.8	0.6	1.7	8.6	12.2	20.7	20.4	8.4	41.3
<b>2000</b>										
February	0.9	8.5	0.7	2.2	10.6	12.6	23.2	20.3	9.3	45.8
December	0.8	7.0	0.7	2.6	9.6	9.5	19.1	26.7	13.4	50.1
<b>2001</b>										
January	0.7	7.8	1.3	3.3	11.1	10.3	21.5	29.7	15.4	51.9
February	0.7	7.4	1.4	2.5	9.9	12.8	22.7	25.5	11.1	43.5
<b>TOTAL</b>										
<b>1998</b>										
February	6.3	15.9	3.4	4.7	20.6	13.7	34.3	22.8	13.6	60.0
<b>2000</b>										
February	6.3	15.8	3.1	4.6	20.4	14.4	34.8	22.6	13.2	58.7
December	7.1	18.1	3.1	5.1	23.2	11.4	34.6	21.9	14.7	67.1
<b>2001</b>										
January	7.1	17.8	2.8	4.9	22.7	11.9	34.6	21.5	14.1	65.6
February	7.1	16.2	3.2	4.5	20.8	13.8	34.6	21.8	13.1	60.1

(a) Persons aged 15–19 years. For explanation of terms and concepts, refer to Labour Force, Australia (Cat. no. 6203.0). Care should be exercised when using these series as some estimates are subject to high sampling variability.

Source: ABS data available on request, Labour Force, Estimates; Labour Force, Teenage Employment and Unemployment, Australia, Preliminary, Data Report (Cat. no. 6202.0.40.001).

## 8

## ALL EMPLOYED PERSONS BY OCCUPATION(a)

	November 1999			November 2000		Proportion of total employed	
	Persons	Males	Females	Persons	November 1999	November 2000	
	'000	'000	'000	'000	%	%	
<b>Managers and administrators</b>							
Generalist managers	1.8	1.9	0.3	2.1	0.9	1.1	
Specialist managers	4.3	2.3	0.4	2.7	2.2	1.3	
Farmers and farm managers	7.5	4.8	2.3	7.0	3.8	3.5	
<b>Total</b>	<b>13.6</b>	<b>8.9</b>	<b>2.9</b>	<b>11.9</b>	<b>6.9</b>	<b>5.9</b>	
<b>Professionals</b>							
Science, building and engineering professionals	3.3	3.0	0.3	3.3	1.7	1.6	
Business and information professionals	4.1	3.9	2.1	6.0	2.1	3.0	
Health professionals	7.9	2.2	7.1	9.3	4.0	4.6	
Education professionals	11.4	4.1	6.0	10.2	5.8	5.1	
Social, arts and miscellaneous professionals	5.3	3.6	2.9	6.5	2.7	3.2	
<b>Total</b>	<b>32.0</b>	<b>16.8</b>	<b>18.5</b>	<b>35.3</b>	<b>16.2</b>	<b>17.5</b>	
<b>Associate professionals</b>							
Science, engineering and related associate professionals	2.5	2.1	0.4	2.5	1.3	1.3	
Business and administration associate professionals	3.4	2.0	2.0	4.0	1.7	2.0	
Managing supervisors (sales and service)	8.8	6.5	3.7	10.2	4.5	5.1	
Health and welfare associate professionals	1.0	0.4	0.8	1.2	0.5	0.6	
Other associate professionals	3.5	1.4	1.9	3.4	1.8	1.7	
<b>Total</b>	<b>18.2</b>	<b>12.1</b>	<b>8.0</b>	<b>20.1</b>	<b>9.2</b>	<b>10.0</b>	
<b>Tradespersons and related workers</b>							
Mechanical and fabrication engineering tradespersons	5.0	5.5	0.1	5.5	2.5	2.8	
Automotive tradespersons	3.3	2.6	—	2.6	1.7	1.3	
Electrical and electronics tradespersons	4.9	4.4	0.1	4.5	2.5	2.2	
Construction tradespersons	4.5	5.1	—	5.1	2.3	2.5	
Other tradespersons and related workers	9.7	7.3	2.5	9.8	4.9	4.9	
<b>Total</b>	<b>27.4</b>	<b>24.8</b>	<b>2.7</b>	<b>27.5</b>	<b>13.9</b>	<b>13.7</b>	
<b>Advanced clerical and service workers</b>							
Secretaries and personal assistants	2.8	0.2	2.4	2.6	1.4	1.3	
Other advanced clerical and service workers	3.4	0.6	2.0	2.6	1.7	1.3	
<b>Total</b>	<b>6.1</b>	<b>0.8</b>	<b>4.4</b>	<b>5.2</b>	<b>3.1</b>	<b>2.6</b>	
<b>Intermediate clerical, sales and service workers</b>							
Intermediate clerical workers	22.4	5.0	16.8	21.8	11.4	10.8	
Intermediate sales and related workers	3.2	3.1	0.7	3.8	1.6	1.9	
Intermediate service workers	14.1	3.3	10.2	13.5	7.2	6.7	
<b>Total</b>	<b>39.8</b>	<b>11.4</b>	<b>27.7</b>	<b>39.1</b>	<b>20.2</b>	<b>19.4</b>	
<b>Intermediate production and transport workers</b>							
Intermediate plant operators	5.7	5.6	0.1	5.7	2.9	2.8	
Intermediate machine operators	2.3	2.0	0.5	2.5	1.1	1.3	
Road and rail transport drivers	6.7	5.8	0.4	6.2	3.4	3.1	
Other intermediate production and transport workers	3.4	3.4	1.4	4.7	1.7	2.4	
<b>Total</b>	<b>18.1</b>	<b>16.7</b>	<b>2.4</b>	<b>19.1</b>	<b>9.2</b>	<b>9.5</b>	
<b>Elementary clerical, sales and service workers</b>							
Elementary clerks	1.1	0.8	0.6	1.4	0.5	0.7	
Elementary sales workers	15.6	6.1	13.4	19.5	7.9	9.7	
Elementary service workers	2.3	1.5	1.0	2.5	1.2	1.2	
<b>Total</b>	<b>19.0</b>	<b>8.5</b>	<b>14.9</b>	<b>23.4</b>	<b>9.6</b>	<b>11.6</b>	
<b>Labourers and related workers</b>							
Cleaners	5.6	1.6	3.0	4.6	2.8	2.3	
Factory labourers	5.9	2.5	1.6	4.1	3.0	2.0	
Other labourers and related workers	11.8	7.2	3.7	10.9	6.0	5.4	
<b>Total</b>	<b>23.2</b>	<b>11.3</b>	<b>8.3</b>	<b>19.6</b>	<b>11.8</b>	<b>9.8</b>	
<b>Total employed</b>	<b>197.5</b>	<b>111.3</b>	<b>89.9</b>	<b>201.2</b>	<b>100.0</b>	<b>100.0</b>	

(a) For explanation of terms and concepts, refer to Labour Force, Australia (Cat. no. 6203.0).

Source: ABS data available on request, Labour Force, Estimates.

## 9

### WAGE AND SALARY EARNERS, SECTOR AND INDUSTRY(a)

	Employees, August 2000			Percentage distribution	
	Private	Public	Total	August 1999	August 2000
	'000	'000	'000	%	%
Agriculture, forestry & fishing	n.a.	0.6	0.6	0.4	0.4
Mining	1.6	—	1.6	0.7	1.0
Manufacturing	n.p.	n.p.	18.7	14.6	12.0
Electricity, gas & water supply	—	1.8	1.8	1.2	1.2
Construction	5.3	0.2	5.5	3.0	3.5
Wholesale trade	7.1	—	7.1	8.1	4.5
Retail trade	27.7	—	27.7	15.1	17.7
Accommodation, cafes & restaurants	10.3	—	10.3	6.1	6.6
Transport & storage	4.7	0.8	5.5	4.0	3.5
Communication services	n.p.	n.p.	2.6	1.3	1.7
Finance and insurance	4.8	0.2	5.0	2.2	3.2
Property & business services	9.5	0.5	10.0	6.6	6.4
Government administration and defence	—	8.4	8.4	5.5	5.4
Education	3.4	14.7	18.1	10.4	11.6
Health and community services	14.2	8.4	22.5	14.1	14.4
Cultural and recreational services	2.8	1.0	3.8	2.4	2.4
Personal and other services	4.3	2.7	6.9	4.2	4.4
<b>Total all industries</b>	<b>115.0</b>	<b>41.2</b>	<b>156.2</b>	<b>100.0</b>	<b>100.0</b>

(a) For explanation of terms and concepts, refer to Wage and Salary Earners, Australia (Cat. no. 6248.0).

Source: Wage and Salary Earners, Australia (Cat. no. 6248.0).

## 10

### AVERAGE HOURS WORKED

	Average weekly total hours worked, all employed persons(a)		
	Males	Females	Persons
<b>1999</b>			
August	39.2	28.1	34.3
November	39.8	27.2	34.1
<b>2000</b>			
February	37.1	24.7	31.6
May	38.9	28.1	34.1
August	38.1	26.7	33.0
November	39.5	27.6	34.2

(a) For explanation of terms and concepts, refer to Labour Force, Australia (Cat. no. 6203.0).

Source: ABS data available on request.



# 11

## JOB VACANCIES(a)(b)

	<i>no.</i>	<i>rate(c)</i>
	'000	%
<b>1999</b>		
August	1.7	1.0
November	2.2	1.3
<b>2000</b>		
February	1.7	1.0
May	1.3	0.8
August	2.5	1.5
November	1.9	1.1

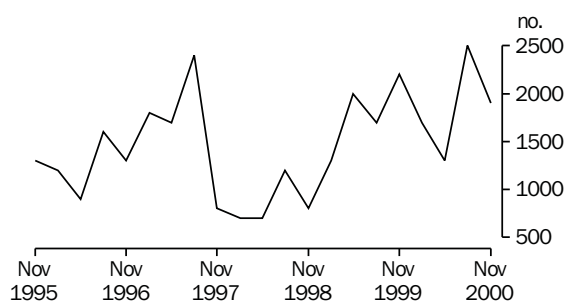
(a) For explanation of terms and concepts, refer to Job Vacancies, Australia (Cat. no. 6354.0).

(b) Care should be exercised in using these series as some estimates are subject to high sampling variability.

(c) Job vacancies expressed as a percentage of the number of employees plus job vacancies.

Source: *Job Vacancies, Australia* (Cat.no. 6354.0).

### JOB VACANCIES



# 12

## INDUSTRIAL DISPUTES(a)

	<i>Working days lost</i>	<i>Twelve months ended</i>	<i>Working days lost per thousand employees</i>
	'000		<i>no.</i>
<b>1999</b>			
December	—	December	2
<b>2000</b>			
January	0.1	January	3
February	—	February	3
March	0.2	March	4
April	0.2	April	5
May	0.2	May	6
June	0.2	June	6
July	—	July	6
August	—	August	6
September	—	September	6
October	—	October	6
November	—	November	6
December	0.2	December	7
<b>Twelve months ended</b>			
December 2000	1.2		

(a) For explanation of terms and concepts, refer to Industrial Disputes, Australia (Cat. no. 6321.0).

Source: *Industrial Disputes, Australia* (Cat.no. 6321.0).

## AVERAGE WEEKLY EARNINGS OF EMPLOYEES(a) — ORIGINAL AND TREND

	<i>Full-time adult males</i>		<i>All males</i>	<i>Full-time adult females</i>		<i>All females</i>	<i>Full-time adult persons</i>		<i>All employees</i>
	<i>Weekly ordinary time earnings</i>	<i>Weekly total earnings</i>	<i>Weekly total earnings</i>	<i>Weekly ordinary time earnings</i>	<i>Weekly total earnings</i>	<i>Weekly total earnings</i>	<i>Weekly ordinary time earnings</i>	<i>Weekly total earnings</i>	<i>Weekly total earnings</i>
	\$	\$	\$	\$	\$	\$	\$	\$	\$
ORIGINAL									
<b>1999</b>									
August	749.70	778.50	660.50	619.10	629.90	420.70	703.60	726.10	537.60
November	761.00	801.60	682.50	641.30	658.90	433.90	719.00	751.50	554.90
<b>2000</b>									
February	767.70	799.30	686.20	639.60	656.70	444.20	723.90	750.60	566.70
May	788.10	828.20	695.80	643.40	659.10	428.00	737.20	768.80	558.10
August	784.20	819.60	677.60	645.40	660.90	422.90	736.50	765.10	547.40
November	784.60	824.70	683.20	663.40	685.10	431.00	741.30	774.80	549.50
TREND(b)									
<b>1999</b>									
August	748.10	784.60	670.40	625.10	638.10	427.30	705.80	734.10	547.10
November	757.70	792.00	675.30	632.60	647.50	432.90	713.80	741.30	551.90
<b>2000</b>									
February	771.60	806.80	684.60	639.10	655.40	435.00	725.10	753.70	558.40
May	782.10	818.10	688.30	645.00	662.00	432.30	734.60	764.10	558.50
August	787.20	825.60	688.80	651.60	669.20	428.70	740.50	771.60	554.50
November	787.90	829.40	685.90	658.60	677.30	427.00	743.20	776.80	549.00

(a) For explanation of terms and concepts, refer to Average Weekly Earnings, Australia (Cat. no. 6302.0).

(b) ABS trend estimates for the most recent months are revised, see Notes on page 2.

Source: Average Weekly Earnings, Australia (Cat. no. 6302.0).

	Index numbers				Percentage change		
	Mar qtr 2000	June qtr 2000	Sep qtr 2000	Dec qtr 2000	Mar qtr 2000 to June qtr 2000	June qtr 2000 to Sep qtr 2000	Sep qtr 2000 to Dec qtr 2000
SELECTED INDUSTRIES(c)							
Manufacturing	106.6	107.0	107.6	108.5	0.4	0.6	0.8
Retail trade	106.0	106.5	108.0	108.9	0.5	1.4	0.8
Transport & storage	108.0	n.a.	n.a.	n.a.	n.a.	n.a.	n.a.
Government administration and defence	104.8	105.4	106.8	107.5	0.6	1.3	0.7
Education	108.3	108.5	110.9	111.0	0.2	2.2	0.1
Health and community services	104.9	105.4	106.3	107.5	0.5	0.9	1.1
<b>All industries(d)</b>	<b>106.5</b>	<b>106.9</b>	<b>108.1</b>	<b>108.9</b>	<b>0.4</b>	<b>1.1</b>	<b>0.7</b>
SELECTED OCCUPATIONS							
Professionals	107.2	107.5	109.3	109.8	0.3	1.7	0.5
Associate Professionals	106.4	106.9	107.9	109.7	0.5	0.9	1.7
Tradespersons & related workers	106.2	106.5	107.6	108.2	0.3	1.0	0.6
Intermediate clerical, sales & service workers	106.0	106.2	107.8	108.1	0.2	1.5	0.3
Intermediate production & transport workers	106.3	106.8	107.5	108.2	0.5	0.7	0.7
Elementary clerical, sales & service workers	108.6	109.3	109.9	110.9	0.6	0.5	0.9
Labourers & related workers	105.5	105.8	107.3	108.1	0.3	1.4	0.7
<b>All occupations</b>	<b>106.5</b>	<b>106.9</b>	<b>108.1</b>	<b>108.9</b>	<b>0.4</b>	<b>1.1</b>	<b>0.7</b>

(a) Base of each index: September quarter 1997 = 100.0.

(b) These indexes are a measure of quarterly changes in wage and salary costs for employee jobs. They are one of four sets of indexes that together comprise the Wage Cost Index. For explanation of terms and concepts, refer to Wage Cost Index, Australia (Cat. no. 6345.0).

(c) Industry is shown at the ANZSIC division level for selected divisions.

(d) Excludes Agriculture, forestry and fishing.

Source: ABS data available on request.

# 15

## SUMMARY OF ANNUAL MOVEMENTS IN WAGES AND PRICES(a)

	CPI all groups–Hobart(b)	Price index of materials used in house building all groups–Hobart(c)	Price index of materials used in building other than house building all groups–Hobart(c)	Average weekly total earnings, full-time adult employees(d)
PERCENTAGE CHANGE FROM PREVIOUS YEAR				
<b>1997–98</b>	–0.1	0.7	0.9	5.1
<b>1998–99</b>	1.0	1.0	0.9	2.4
<b>1999–2000</b>	1.9	1.3	0.4	2.5
<b>1998</b>				
December	1.2	1.4	1.2	3.3
<b>1999</b>				
March	0.5	0.7	0.7	3.4
June	0.4	–0.1	0.2	–0.3
September	0.4	–0.3	0.1	0.8
December	1.1	0.2	–0.2	2.3
<b>2000</b>				
March	2.6	2.0	0.6	0.6
June	3.3	3.4	1.2	6.5
September	6.5	(e)2.5	(e)–0.5	5.4
December	5.8	2.4	0.6	3.1

(a) Weekly award rates of pay collection has been discontinued from June 1997.

(b) See note 5 on page 2 of this issue on the impacts of The New Tax System (TNTS).

(c) Only quarterly data collected from June 1997. Earlier data has been re-compiled from monthly to quarterly.

(d) March, June, September and December data relates to February, May, August and November survey dates as published in Average Weekly Earnings, Australia (Cat. no. 6302.0).

(e) This quarter affected by the removal of the Wholesale Sales Tax from 1 July 2000.

Source: Consumer Price Index, Australia (Cat. no. 6401.0); Price Index of Materials Used in House Building, Six State Capital Cities (Cat. no. 6408.0), (quarterly from June 1997); Price Index of Materials Used in Other than House Building, Six State Capital Cities (Cat. no. 6407.0), (quarterly from June 1997); Average Weekly Earnings, Australia (Cat. no. 6302.0).

# 16

## HOUSE PRICE INDEX NUMBERS(a)(b)

	Established house price index		Project home price index	
	Index	% change(c)	Index	% change(c)
<b>1997–98</b>	125.4	–2.4	123.3	—
<b>1998–99</b>	123.2	–1.8	123.3	—
<b>1999–2000</b>	129.0	4.7	126.2	2.4
<b>1998</b>				
December	121.7	–1.7	123.3	—
<b>1999</b>				
March	123.7	1.6	123.3	—
June	123.6	–0.1	123.3	—
September	125.3	1.4	124.0	0.6
December	127.8	2.0	125.4	1.1
<b>2000</b>				
March	128.6	0.6	127.5	1.7
June	134.2	4.4	127.9	0.3
September	134.3	0.1	(d)140.3	(d)9.7
December	133.7	–0.4	140.3	—

(a) Base of each Index: 1989–90 = 100.

(b) Used in calculating the mortgage interest charges component of the Consumer Price Index.

(c) Percentage change over previous period.

(d) See note 5 on page 2 of this issue on the impacts of The New Tax System (TNTS) introduced on 1 July 2000.

Source: House Price Indexes: Eight Capital Cities (Cat. no. 6416.0).

Hobart

	Food	Clothing and Footwear	Housing	Household furnishings, supplies and services	Transportation	Alcohol and tobacco
<b>1997</b>						
December	121.7	106.0	95.5	119.7	122.1	155.6
<b>1998</b>						
March	121.7	105.5	95.3	119.4	121.7	158.0
June	122.3	105.3	95.5	119.5	120.5	160.2
September	124.7	105.1	95.6	120.4	120.4	159.6
December	125.0	105.7	95.4	120.8	118.6	159.1
<b>1999</b>						
March	125.5	104.7	95.8	119.5	118.4	161.5
June	126.8	104.6	95.9	119.4	120.4	160.0
September	126.3	104.5	96.9	119.3	123.1	158.1
December	127.5	103.9	97.4	119.1	123.8	163.3
<b>2000</b>						
March	127.8	104.9	98.8	120.2	126.6	167.2
June	129.1	105.0	99.2	121.2	129.3	169.9
September	130.9	112.8	105.5	124.5	133.3	179.8
December	132.0	112.9	105.8	124.6	130.4	181.6

Weighted average of eight capital cities

Hobart

	Health	Education	Index, all groups	% change over previous period, all groups	Index	% change over previous period
<b>1997</b>						
December	175.7	182.3	121.2	0.5	120.0	0.3
<b>1998</b>						
March	178.6	190.0	121.5	0.2	120.3	0.3
June	183.0	190.0	122.0	0.4	121.0	0.6
September	190.4	190.0	122.8	0.7	121.3	0.2
December	187.8	190.0	122.7	-0.1	121.9	0.5
<b>1999</b>						
March	164.9	198.8	122.1	-0.5	121.8	-0.1
June	165.7	198.8	122.5	0.3	122.3	0.4
September	173.3	198.8	123.3	0.7	123.4	0.9
December	172.0	198.8	124.0	0.6	124.1	0.6
<b>2000</b>						
March	175.1	206.2	125.3	1.0	125.2	0.9
June	177.7	206.2	126.5	1.0	126.2	0.8
September	178.0	206.5	131.3	3.8	130.9	3.7
December	177.4	206.5	131.2	-0.1	131.3	0.3

(a) Base year: 1989-90 = 100.

(b) Further information on construction of CPI indexes is contained in the bulletin Australian Consumer Price Index Concepts, Sources and Methods (Cat. no. 6461.0).

(c) As a result of the introduction of the 14th Series Australian CPI there have been changes to some groups and restructuring of some others. See Appendix A4 of the September quarter issue of Consumer Price Index, Australia (Cat. no. 6401.0) for more information.

(d) See Note 5 on page 2 of this issue on the impacts of The New Tax System (TNTS) introduced on 1 July 2000.

Source: Consumer Price Index, Australia (Cat. no. 6401.0).

*Index numbers for selected major building materials*

	<i>Structural timber</i>	<i>Clay bricks</i>	<i>Ready mixed concrete</i>	<i>Precast concrete products</i>	<i>Steel decking, cladding etc.</i>	<i>Structural steel</i>
<b>1997-98</b>	108.9	129.0	118.0	131.5	117.8	127.2
<b>1998-99</b>	109.1	130.8	119.5	131.6	110.8	128.0
<b>1999-2000</b>	114.4	129.1	118.1	131.6	109.6	128.8
<b>1998</b>						
December	108.9	131.1	120.6	131.7	111.3	128.1
<b>1999</b>						
March	108.9	131.1	120.4	131.5	110.3	128.1
June	109.2	130.8	117.9	131.5	110.3	128.1
September	108.2	126.9	119.4	131.6	113.7	128.8
December	111.7	126.9	118.0	131.6	104.6	128.8
<b>2000</b>						
March	116.9	130.9	117.5	131.6	110.1	128.8
June	120.7	131.6	117.5	131.6	109.8	128.8
September(c)	120.9	131.6	117.6	131.6	106.4	129.1
December	120.9	131.8	117.6	131.6	108.2	129.4

*Index numbers for selected major building materials*

	<i>Reinforcing steel bar, fabric and mesh</i>	<i>Aluminium windows</i>	<i>Fabricated steel products</i>	<i>Builders hardware</i>	<i>Sand and aggregate</i>	<i>Paint and other coatings</i>	<i>Non-ferrous pipes and fittings</i>
<b>1997-98</b>	112.7	107.2	114.7	113.7	124.5	127.3	164.3
<b>1998-99</b>	113.4	107.3	116.0	113.4	127.9	133.3	161.2
<b>1999-2000</b>	110.5	108.5	114.0	116.0	144.0	133.7	168.2
<b>1998</b>							
December	113.3	106.7	116.1	113.9	127.9	133.9	160.2
<b>1999</b>							
March	113.4	106.9	116.1	114.8	127.9	134.2	161.4
June	113.4	107.0	115.6	111.3	127.9	132.5	160.2
September	113.4	107.0	116.1	110.8	135.4	131.7	162.4
December	110.2	107.0	113.6	114.8	139.4	133.5	166.0
<b>2000</b>							
March	109.1	109.9	113.1	120.2	150.4	135.2	167.2
June	109.1	110.1	113.1	118.1	150.9	134.2	177.0
September(c)	107.8	110.1	113.1	117.3	145.5	131.8	177.2
December	107.9	116.6	113.0	118.8	146.1	135.7	183.8

(a) Base year: 1989-90 = 100.

(b) Index numbers in this table have been recompiled to reflect the change to a quarterly collection basis from June 1997.

(c) This quarter affected by the removal of the Wholesale Sales Tax from 1 July 2000.

	<i>All electrical materials</i>		<i>All mechanical services</i>		<i>All plumbing materials</i>	
	<i>Index</i>	<i>% change over previous period</i>	<i>Index</i>	<i>% change over previous period</i>	<i>Index</i>	<i>% change over previous period</i>
<b>1997-98</b>	117.2	-0.2	117.0	—	121.9	-0.7
<b>1998-99</b>	115.8	-1.2	119.0	1.7	124.5	2.1
<b>1999-2000</b>	117.6	1.6	120.3	1.1	127.0	2.0
<b>1998</b>						
December	116.8	0.6	119.1	1.1	124.1	-0.6
<b>1999</b>						
March	115.2	-1.4	119.4	0.3	124.4	0.2
June	115.2	—	119.5	0.1	124.5	0.1
September	115.9	0.6	119.3	-0.2	122.3	-1.8
December	117.5	1.4	119.8	0.4	126.5	3.4
<b>2000</b>						
March	118.3	0.7	120.3	0.4	128.0	1.2
June	118.7	0.3	121.9	1.3	131.0	2.3
September(c)	115.8	-2.4	117.3	-3.8	129.1	-1.5
December	117.6	1.6	118.0	0.6	131.8	2.1

	<i>All groups excluding electrical materials and mechanical services</i>		<i>All groups</i>	
	<i>Index</i>	<i>% change over previous period</i>	<i>Index</i>	<i>% change over previous period</i>
<b>1997-98</b>	118.0	1.0	117.4	0.9
<b>1998-99</b>	118.8	0.7	118.5	0.9
<b>1999-2000</b>	119.1	0.3	119.0	0.4
<b>1998</b>				
December	119.0	-0.1	118.6	0.2
<b>1999</b>				
March	118.8	-0.2	118.5	-0.1
June	118.4	-0.3	118.3	-0.2
September	118.8	0.3	118.5	0.2
December	118.4	-0.3	118.4	-0.1
<b>2000</b>				
March	119.3	0.8	119.2	0.7
June	119.7	0.3	119.7	0.4
September(c)	118.8	-0.8	117.9	-1.5
December	120.1	1.1	119.1	1.0

(a) Base year: 1989-90 = 100.

(b) Index numbers in this table have been recompiled to reflect the change to a quarterly collection basis from June 1997.

(c) This quarter affected by the removal of the Wholesale Sales Tax from 1 July 2000.

*Source: Price Index of Materials Used in Other than House Building, Six State Capital Cities (Cat. no. 6407.0).*

	<i>Dairy products(a)</i>			<i>Staff hours worked</i>	
	<i>Whole milk(b)</i>	<i>Factory butter(c)</i>	<i>Factory cheese</i>	<i>Textile manufacturing(d)</i>	<i>Vegetable preserving</i>
	<i>million litres</i>	<i>tonnes</i>	<i>tonnes</i>	<i>'000</i>	<i>'000</i>
<b>1997-98</b>	542.8	8 745	26 835	1 125	1 128
<b>1998-99</b>	603.4	11 546	29 973	1 061	1 084
<b>1999-2000</b>	608.6	8 209	r33 344	1 032	1 019
<b>2000</b>					
January	66.8	879	3 735	43	60
February	51.7	378	3 473	96	90
March	47.3	608	3 804	103	92
April	38.0	363	2 857	75	88
May	29.7	232	983	107	107
June	17.5	465	683	83	90
July	10.1	226	291	82	80
August	23.3	210	989	100	97
September	58.7	n.y.a.	n.y.a.	75	62
October	n.y.a.	n.y.a.	n.y.a.	97	62
November	n.y.a.	n.y.a.	n.y.a.	96	100
December	n.y.a.	n.y.a.	n.y.a.	60	86
<b>2001</b>					
January	n.y.a.	n.y.a.	n.y.a.	50	65
		<i>Refined zinc</i>	<i>Metallurgical refining</i>		<i>Electricity(f)</i>
		<i>'000 tonnes</i>	<i>Index(e)</i>		<i>million kW.h</i>
<b>1997-98</b>		197.0	116.6		9 700
<b>1998-99</b>		214.3	125.0		9 910
<b>1999-2000</b>		231.7	133.2		10050.0
<b>2000</b>					
January		20.1	130.3		..
February		18.6	126.4		..
March		19.6	141.2	(Mar qtr)	2 360
April		18.7	133.8		..
May		18.7	136.4		..
June		18.7	137.2	(June qtr)	2 620
July		20.6	144.0		..
August		21.0	143.8		..
September		18.0	134.3	(Sept qtr)	2 760
October		20.5	145.1		..
November		18.5	136.2		..
December		12.5	126.0	(Dec qtr)	2 410
<b>2001</b>					
January		20.1	140.3		..

(a) Source: Australian Dairy Corporation.

(b) Includes the whole milk equivalent of farm cream intake.

(c) Includes butter equivalent of butter oil.

(d) Includes spinning, weaving and carpet making. Reported by establishments which manufacture textiles only, or manufacture clothing and textiles in the one plant.

(e) Metallurgical refining index (Base year: 1979-80 = 100.0). Output from selected establishments covering the smelting and refining of ferro-alloys, zinc and aluminium. The weighting pattern is based on the establishments' value added as derived from the 1979-80 manufacturing Census. For multi product establishments, value added was apportioned to products on the basis of gross receipts from each product.

(f) Collected on a quarterly basis as from 1997.

Source: ABS data available on request.



## 20

## LIVESTOCK SLAUGHTERING

	Cattle					
	<i>Bulls, bullocks and steers</i>	<i>Cows and heifers</i>	<i>Calves</i>	<i>Sheep</i>	<i>Lambs</i>	<i>Pigs</i>
	'000	'000	'000	'000	'000	'000
<b>1997-98</b>	93.4	123.6	53.9	461.0	423.3	78.1
<b>1998-99</b>	94.8	116.3	61.0	439.9	480.1	81.2
<b>1999-2000</b>	109.0	108.9	62.1	589.9	456.3	70.1
<b>2000</b>						
January	8.9	8.1	0.2	55.6	38.4	4.3
February	9.3	10.1	0.2	68.0	46.0	5.3
March	11.7	11.1	0.8	76.4	55.5	6.8
April	8.3	8.5	1.4	53.1	32.3	4.9
May	9.0	11.6	1.7	48.2	37.5	5.7
June	9.1	12.9	0.9	51.5	44.1	6.7
July	7.0	6.7	1.2	23.0	36.2	5.0
August	5.7	3.7	15.2	17.9	39.1	4.8
September	6.2	4.3	22.9	18.7	37.9	4.8
October	5.9	5.8	5.6	24.3	32.2	4.1
November	7.1	6.9	0.9	20.7	31.0	4.0
December	—	—	—	—	—	—
<b>2001</b>						
January	8.8	7.7	0.2	41.0	32.1	3.8

Source: ABS data available on request.

## 21

## LIVESTOCK SLAUGHTERING — SEASONALLY ADJUSTED(a) AND TREND(b)

	Seasonally adjusted			Trend		
	<i>Cattle and calves</i>	<i>Sheep and lambs</i>	<i>Pigs</i>	<i>Cattle and calves</i>	<i>Sheep and lambs</i>	<i>Pigs</i>
	'000	'000	'000	'000	'000	'000
<b>2000</b>						
January	25.7	80.9	5.6	23.3	84.3	5.7
February	23.9	85.9	6.0	23.6	85.0	5.7
March	26.1	93.5	5.8	23.5	85.8	5.6
April	20.1	82.4	5.4	22.9	86.5	5.5
May	22.1	85.2	5.2	21.7	87.2	5.3
June	22.2	92.0	5.1	20.4	86.9	5.2
July	18.6	75.3	5.1	19.2	85.5	5.0
August	16.2	89.1	4.6	18.5	82.7	4.9
September	19.6	84.5	5.1	18.3	78.6	4.8
October	18.3	79.2	4.9	18.6	73.5	4.7
November	17.9	50.8	4.1	19.2	68.2	4.7
December	20.4	69.2	5.0	19.9	63.3	4.6
<b>2001</b>						
January	22.4	58.5	4.4	20.8	59.9	4.5

(a) Seasonally adjusted factors are reviewed annually to take account of each additional year's original data. The results of the review are used to compile revised seasonally adjusted and trend estimates; see Notes page 2.

(b) ABS trend estimates for the most recent months are revised; see Notes page 2.

Source: ABS data available on request.

## 22

### MEAT PRODUCTION(a)

	Beef	Veal	Mutton	Lamb	Pigmeat(b)	Total
	tonnes	tonnes	tonnes	tonnes	tonnes	tonnes
<b>1997-98</b>	53 064	1 149	9 841	8 072	4 916	77 041
<b>1998-99</b>	53 271	1 241	8 724	9 222	5 242	77 700
<b>1999-2000</b>	57 557	1 236	11 796	8 833	4 403	83 825
<b>2000</b>						
January	4 662	7	1 120	731	269	6 789
February	5 154	7	1 364	884	333	7 741
March	6 091	20	1 518	1 071	425	9 125
April	4 455	31	1 052	619	308	6 465
May	5 317	37	949	729	366	7 399
June	5 529	20	1 012	867	436	7 863
July	3 581	26	445	693	324	5 068
August	2 528	293	338	771	299	4 230
September	2 884	444	363	737	304	4 733
October	3 181	112	478	617	257	4 646
November	3 908	21	415	595	254	5 194
December	5 200	8	717	780	325	7 030
<b>2001</b>						
January	4 511	7	826	612	235	6 191

(a) Carcass weight.

(b) Includes pork used for production of bacon and ham.

Source: ABS data available on request.

## 23

### PRINCIPAL MINERAL CONCENTRATES PRODUCED

	Copper	Iron (pellets)	Lead	Lead-zinc	Tin	Zinc
	'000 tonnes	'000 tonnes	'000 tonnes	'000 tonnes	'000 tonnes	'000 tonnes
<b>1997-98</b>	109.6	820.8	84.6	26.2	16.2	335.4
<b>1998-99</b>	113.5	1 816.1	101.8	12.6	12.5	382.3
<b>1999-2000</b>	104.3	2 068.3	98.7	7.9	14.8	311.9
<b>1998</b>						
December	29.9	478.2	26.1	3.2	4.0	95.3
<b>1999</b>						
March	30.5	481.2	29.5	2.5	3.7	97.1
June	27.3	403.4	24.7	1.5	3.6	98.0
September	27.5	479.5	28.4	2.7	3.9	94.8
December	26.9	568.2	28.1	2.5	4.0	86.2
<b>2000</b>						
March	26.2	517.7	22.4	1.4	3.3	70.4
June	23.8	502.9	19.8	1.3	3.6	60.4
September	21.6	544.2	7.7	—	3.2	26.8
December p	24.9	500.7	9.7	—	3.4	29.4

Source: Mineral Resources Tasmania, Department of Infrastructure, Energy and Resources.

## SAWMILLS AND PLYWOOD MILLS, LOGS DELIVERED AND TIMBER PRODUCED

	Tasmanian-grown logs delivered					Sawn, peeled and sliced timber produced(a)				
	Eucalypts	Hardwoods, excluding eucalypts(b)	Plant- ation(c)	Native soft- woods(d)	Total	Eucalypts	Hardwoods, excluding eucalypts(b)	Plant- ation(c)	Native soft- woods(d)	Total
		'000 m <sup>3</sup>	'000 m <sup>3</sup>	'000 m <sup>3</sup>			'000 m <sup>3</sup>	'000 m <sup>3</sup>	'000 m <sup>3</sup>	
<b>1997-98</b>	496.8	24.3	357.7	1.6	880.3	171.1	5.3	167.3	0.4	344.2
<b>1998-99</b>	499.9	22.6	351.9	1.0	875.4	159.7	5.1	169.7	0.3	334.8
<b>1999-2000</b>	510.1	28.8	396.2	0.9	936.9	169.7	5.3	190.6	0.4	366.0
<b>1998</b>										
December	134.6	2.9	81.3	0.2	218.9	40.8	1.2	42.5	0.1	84.7
<b>1999</b>										
March	110.8	9.7	90.7	0.2	211.4	35.4	0.8	42.6	—	78.9
June	124.6	6.1	91.3	0.3	222.3	39.6	1.7	43.1	0.1	84.5
September	136.0	6.3	109.4	0.2	252.0	46.2	1.3	49.1	0.1	96.8
December	132.5	5.1	87.8	0.2	225.6	45.8	1.5	46.5	0.1	93.9
<b>2000</b>										
March	104.3	10.0	100.7	0.4	215.3	37.8	1.3	47.8	0.1	87.0
June	137.3	7.3	98.2	0.2	243.1	39.8	1.3	47.3	0.1	88.3
September	130.7	5.0	103.8	0.3	239.9	42.4	1.7	46.6	0.1	90.9
December	118.1	4.3	82.7	0.2	205.2	41.6	1.3	41.4	—	84.3

(a) Includes plywood, veneer and sliced timber production converted to an equivalent cubic measurement.

(b) Includes blackwood, myrtle, sassafras etc.

(c) Radiata pine.

(d) Includes Huon pine, celery top pine and King William pine.

Source: ABS data available on request.

## 25

### CHIPPING AND GRINDING OF WOOD(a)

	Producing locations(b)	Materials used(c)		Chipped and ground wood production '000 tonnes green weight
		Logs delivered(d)	Sawmill offcuts	
		no.	'000 m <sup>3</sup>	
<b>1997-98</b>	28	3 998.1	457.9	4 440.1
<b>1998-99</b>	29	3 459.6	373.4	3 929.9
<b>1999-2000</b>	30	4 526.8	452.5	5 145.3
<b>1998</b>				
December	29	798.3	112.0	889.5
<b>1999</b>				
March	29	862.9	79.2	997.7
June	29	925.9	94.9	1 061.1
September	30	1 056.8	134.1	1 225.3
December	30	1 103.8	96.4	1 207.3
<b>2000</b>				
March	30	1 152.1	104.6	1 308.7
June	30	1 214.1	117.4	1 404.0
September	31	1 259.5	104.0	1 451.7
December	30	1 328.2	120.3	1 420.6

(a) Both hardwoods and softwoods, separate details are not available.

(b) Capable of producing at end of year or actually producing during quarter.

(c) Data reported by weight, converted to cubic measure by the factor of 0.95 m<sup>3</sup> per tonne.

(d) Includes log equivalent of limbwood and billets.

Source: ABS data available on request.

## 26

### LOGS DELIVERED FOR MILLING OR CHIPPING

	Sawmilling and plywood milling			Chipping and grinding(a)			Total		
	Crown land(b)	Private land	Total	Crown land(b)	Private land	Total	Crown land(b)	Private land	Total
	'000 m <sup>3</sup>	'000 m <sup>3</sup>	'000 m <sup>3</sup>	'000 m <sup>3</sup>	'000 m <sup>3</sup>	'000 m <sup>3</sup>	'000 m <sup>3</sup>	'000 m <sup>3</sup>	'000 m <sup>3</sup>
<b>1997-98</b>	750.7	129.6	880.3	1 894.9	2 103.1	3 998.1	2 645.7	2 232.7	4 878.3
<b>1998-99</b>	754.2	121.2	875.4	1 562.6	1 897.0	3 459.6	2 316.7	2 018.2	4 334.9
<b>1999-2000</b>	834.4	101.6	935.9	2 440.5	2 086.3	4 526.8	3 274.9	2 187.8	5 462.7
<b>1998</b>									
December	185.5	33.4	218.9	422.4	375.9	798.3	607.9	409.3	1 017.2
<b>1999</b>									
March	184.1	27.3	211.4	367.0	495.8	862.9	551.1	523.2	1 074.3
June	196.2	26.1	222.3	432.1	493.8	925.9	628.3	519.9	1 148.2
September	221.8	30.2	252.0	554.0	502.7	1 056.8	775.8	532.9	1 308.7
December	202.5	23.1	225.6	643.1	460.7	1 103.8	845.6	483.8	1 329.4
<b>2000</b>									
March	192.1	23.2	215.3	585.3	566.9	1 152.1	777.3	590.1	1 367.4
June	218.0	25.1	243.1	658.1	555.9	1 214.1	876.1	581.0	1 457.1
September	219.7	20.2	239.9	729.7	529.8	1 259.5	949.4	550.1	1 499.4
December	184.3	20.9	205.2	779.7	548.5	1 328.2	964.0	569.5	1 533.5

(a) Logs used are generally below sawmilling standard: includes log equivalent of limbwood and billets.

(b) Comprises all areas (including concession areas) from which royalties are payable to Forestry Tasmania.

Source: ABS data available on request.

							<i>Value(e)</i>		
	<i>Dwelling units</i>				New dwelling units	Alterations and additions to residential buildings(c)	<i>Non-residential buildings(d)</i>		Total of all building
	New houses	New other residential buildings(a)	Other dwelling units created (conversions etc.) (b)	Total dwelling units			Private	Total	
no.	no.	no.	no.	\$m	\$m	\$m	\$m	\$m	
<b>1997-98</b>	1 419	219	5	1 643	142.4	38.4	82.8	125.5	306.3
<b>1998-99</b>	1 297	104	9	1 410	131.2	36.8	115.8	174.6	342.6
<b>1999-2000</b>	1 608	230	55	1 893	193.4	50.7	120.7	160.6	404.7
<b>2000</b>									
January	139	28	13	180	21.2	4.3	5.8	6.4	31.9
February	135	33	0	168	16.4	4.3	20.7	21.4	42.2
March	149	14	3	166	17.5	4.1	7.0	9.8	31.4
April	122	12	2	136	13.8	3.9	2.3	8.0	25.7
May	159	45	29	233	25.7	8.0	10.7	17.1	50.8
June	84	4	3	91	10.3	4.3	6.4	16.7	31.2
July	83	—	1	84	7.9	2.6	4.3	7.3	17.7
August	82	—	1	83	8.9	4.1	4.7	10.7	23.7
September	100	19	—	119	12.7	2.2	21.5	23.2	38.1
October	105	16	—	121	13.5	4.5	9.5	12.6	30.7
November	112	4	—	116	12.2	3.5	9.6	13.1	28.8
December	53	4	—	57	6.3	3.2	r9.4	r12.4	r22.0
<b>2001</b>									
January	89	2	2	93	9.5	3.3	1.9	16.5	29.4

(a) New individual dwelling units (e.g. flats, home units and villa units).

(b) From alterations and additions to residential building, conversions of non-residential building to residential building etc.

(c) Valued at \$10,000 and over. Includes conversions and dwelling units approved as part of alterations and additions or as part of the construction of non-residential building.

(d) Comprises non-residential building (new plus alterations and additions) valued at \$50,000 and over.

(e) Value data from July 2000 reference month onward are recorded inclusive of GST. See Building Approvals, Australia (Cat. no. 8731.0) or page 2 of this publication for more details.

Source: *Building Approvals, Australia* (Cat. no. 8731.0).

## 28

## SECURED HOUSING COMMITMENTS — ORIGINAL, SEASONALLY ADJUSTED AND TREND

	Total number of dwellings(a)			Total value of commitments(b)		
	Original	Seasonally adjusted	Trend	Original	Seasonally adjusted	Trend
	no.	no.	no.	\$m	\$m	\$m
<b>2000</b>						
January	634	762	803	53	63	66
February	850	838	798	71	69	66
March	880	794	821	73	65	67
April	751	790	871	61	68	70
May	1 135	982	932	87	75	73
June	946	978	987	71	77	76
July	1 101	1 134	1 031	81	82	79
August	1 147	1 049	1 060	86	81	80
September	948	1 015	1 076	71	75	79
October	1 075	1 073	1 085	78	78	78
November	1 162	1 082	1 094	83	79	76
December	1 095	1 228	1 102	75	80	75
<b>2001</b>						
January	899	1 017	1 101	58	64	73

(a) Includes new dwellings, established dwellings and refinancing. Excludes alterations and additions.

(b) Commitment is a firm offer of housing finance. It either has been, or is normally expected to be, accepted. Includes commitments to provide housing finance to employees and commitments accepted and cancelled in the same month. Excludes alterations and additions. Includes refinancing.

Source: Housing Finance for Owner Occupation, Australia (Cat. no. 5609.0).

## 29

## PRIVATE CAPITAL EXPENDITURE BY TYPE OF ASSET AND INDUSTRY (a)(b)(c)

	ASSET				INDUSTRY		
	Buildings and structures	Equipment, plant and machinery	Total asset	Mining	Manufacturing	Other selected industries	Total all industries
	\$m	\$m	\$m	\$m	\$m	\$m	\$m
<b>1997-98</b>	169	477	646	85	239	322	646
<b>1998-99</b>	130	345	475	48	144	283	475
<b>1999-2000</b>	70	385	456	53	128	275	456
<b>1998</b>							
September	40	101	141	17	33	90	141
December	25	70	95	8	28	59	95
<b>1999</b>							
March	30	85	115	10	38	67	115
June	35	89	124	13	44	67	124
September	14	83	97	10	35	52	97
December	15	98	114	8	33	73	114
<b>2000</b>							
March	14	74	88	14	25	49	88
June	28	130	157	20	36	101	157
September	31	95	126	35	35	56	126

(a) Estimates based on a sample survey and therefore subject to sampling variability. Covers selected industries only — mining, manufacturing, finance, property and other selected industries.

(b) Current prices.

(c) See Cat. no. 5646.0 or page 2 of this issue on the impacts of The New Tax System (TNTS) introduced on 1 July 2000.

Source: Private New Capital Expenditure, State Estimates (Cat. no. 5646.0).

	<i>Deposits</i>				
	<i>Current bearing interest</i>	<i>Current not bearing interest</i>	<i>Fixed</i>	<i>Investment savings accounts</i>	<i>Statement savings accounts</i>
	<i>\$m</i>	<i>\$m</i>	<i>\$m</i>	<i>\$m</i>	<i>\$m</i>
<b>2000</b>					
January	861	260	1 098	599	283
February	862	260	1 039	595	282
March	878	276	1 106	593	283
April	863	282	1 113	587	284
May	1 088	268	1 108	429	249
June	1 241	274	1 108	299	226
July	1 250	264	1 202	275	228
August	1 280	259	1 222	280	243
September	1 271	270	1 198	281	244
October	1 298	279	1 228	280	247
November	1 270	284	1 154	277	249
December	1 329	308	1 196	276	251
<b>2001</b>					
January	1 319	296	1 243	275	248

	<i>Deposits</i>			
	<i>Passbook/school savings accounts</i>	<i>Other</i>	<i>Total</i>	<i>Loans(b)</i>
	<i>\$m</i>	<i>\$m</i>	<i>\$m</i>	<i>\$m</i>
<b>2000</b>				
January	83	82	3 266	4 950
February	82	82	3 202	5 039
March	81	82	3 301	5 056
April	80	83	3 292	5 021
May	54	84	3 281	5 116
June	37	84	3 269	5 128
July	39	83	3 341	5 229
August	39	86	3 408	5 143
September	40	89	3 392	5 099
October	39	88	3 459	5 103
November	39	85	3 359	5 147
December	39	85	3 484	5 195
<b>2001</b>				
January	39	87	3 508	5 222

(a) Details are the averages of weekly figures for each month. The figures are derived from returns submitted by banks authorised under the Banking Act together with similar returns voluntarily submitted by the State banks; they exclude the Reserve Bank.

(b) Excludes non-resident loans.

Source: Reserve Bank of Australia.

	<i>Establish- ments</i>	<i>Guest rooms</i>	<i>Bed spaces</i>	<i>Persons employed</i>	<i>Room nights occupied</i>	<i>Room occupancy rate</i>	<i>Guest nights</i>	<i>Bed occupancy rate</i>	<i>Guest arrivals</i>	<i>Takings from accommodation(c)</i>
	<i>no.</i>	<i>no.</i>	<i>no.</i>	<i>no.</i>	<i>'000</i>	<i>%</i>	<i>'000</i>	<i>%</i>	<i>'000</i>	<i>\$'000</i>
<b>LICENSED HOTELS WITH FACILITIES</b>										
<b>1999</b>										
September qtr	54	2 897	7 926	2 767	110.9	41.8	177.7	24.5	95.7	9 429
<b>2000</b>										
July	n.a.	n.a.	n.a.	n.a.	30.3	33.7	46.4	18.7	24.6	2 768
August	n.a.	n.a.	n.a.	n.a.	35.3	39.2	53.7	21.6	27.5	3 376
September	n.a.	n.a.	n.a.	n.a.	36.9	42.2	61.3	25.5	33.9	3 321
September qtr	54	2 909	8 023	2 842	102.5	38.3	161.4	21.9	86.1	9 465
<b>MOTELS AND GUEST HOUSES WITH FACILITIES</b>										
<b>1999</b>										
September qtr	51	1 751	5 409	651	58.1	36.2	108.9	21.9	62.8	4 363
<b>2000</b>										
July	n.a.	n.a.	n.a.	n.a.	15.7	29.0	28.7	17.0	15.8	1 311
August	n.a.	n.a.	n.a.	n.a.	16.5	31.4	29.9	18.3	17.0	1 345
September	n.a.	n.a.	n.a.	n.a.	20.3	40.1	41.2	26.0	23.2	1 702
September qtr	51	1 749	5 441	665	52.6	33.4	99.8	20.3	56.0	4 359
<b>SERVICED APARTMENTS</b>										
<b>1999</b>										
September qtr	24	857	3 395	393	36.5	46.3	75.0	24.0	32.6	3 500
<b>2000</b>										
July	n.a.	n.a.	n.a.	n.a.	10.8	39.7	21.9	21.2	8.8	1 138
August	n.a.	n.a.	n.a.	n.a.	11.1	40.9	21.4	20.7	9.2	1 164
September	n.a.	n.a.	n.a.	n.a.	14.0	53.3	32.5	32.6	13.8	1 459
September qtr	25	876	3 330	427	35.9	44.6	75.8	24.7	31.8	3 762
<b>TOTAL ESTABLISHMENTS</b>										
<b>1999</b>										
September qtr	129	5 505	16 730	3 811	205.5	40.7	361.5	23.6	191.1	17 292
<b>2000</b>										
July	n.a.	n.a.	n.a.	n.a.	56.8	33.1	97.0	18.6	49.2	5 218
August	n.a.	n.a.	n.a.	n.a.	63.0	37.0	105.0	20.4	53.8	5 885
September	n.a.	n.a.	n.a.	n.a.	71.2	43.4	135.0	27.1	70.9	6 483
September qtr	130	5 534	16 794	3 934	191.0	37.8	337.0	22.0	173.9	17 585

(a) Comprising establishments with 15 or more rooms or units. For explanation of terms and concepts refer to Tourist Accommodation, Australia (Cat. no. 8635.0).

(b) For the four quarters of 2000, the scope of the Survey of Tourist Accommodation (STA) has been expanded. Over this period the following accommodation sectors will be covered: hotels, motels, guest houses and serviced apartments with 15 or more rooms; holiday flats, units and houses operated by owners, managers or real estate agents who have sole letting rights to at least 15 flats, units or houses for short term letting; caravan parks with 40 or more powered sites, cabins, etc; and visitor hostels with 25 or more bed spaces.

(c) Takings from accommodation' after 1 July 2000 are recorded inclusive of GST. See Cat. no. 8635.0 or page 2 of this publication for more details.

Source: Tourist Accommodation, Australia (Cat. no. 8635.0). For more detailed information, see Tourist Accommodation, Small Area Data, Tasmania (Cat. no. 8635.6.40.001).



## 32

### NATIONAL PARKS, PERSON ENTRIES(a)

Tasmanian National Park attendance

	<i>Cradle Mountain(b)</i> <i>(Lake Dove)</i>	<i>Lake St Clair(b)</i> <i>(Cynthia Bay)</i>	<i>Freycinet(b)</i>	<i>Mt Field(b)</i>	<i>Narawntapu(c)</i> <i>(Bakers Beach)</i>	<i>Mole Creek Karst(d)</i> <i>(Marakoopa Cave)</i>	<i>Maria Island(e)</i> <i>(Darlington)</i>
	<i>no.</i>	<i>no.</i>	<i>no.</i>	<i>no.</i>	<i>no.</i>	<i>no.</i>	<i>no.</i>
<b>1999–2000</b>	200 700	111 600	308 500	130 700	33 200	29 460	13 213
<b>2000</b>							
February	22 300	14 400	33 400	16 400	3 700	2 591	1 617
March	21 800	15 000	31 700	13 500	3 300	2 750	1 642
April	23 000	13 100	44 000	14 000	2 600	3 225	1 615
May	8 300	5 500	21 700	5 600	1 100	1 350	603
June	8 600	3 300	17 400	6 000	1 400	1 576	526
July	6 600	2 800	10 000	5 200	1 000	1 023	62
August	7 600	2 600	10 600	6 300	1 200	1 140	313
September	10 600	6 200	16 500	9 800	2 100	2 354	929
October	11 400	6 900	15 100	9 200	2 600	1 798	748
November	15 000	9 400	21 700	11 000	3 600	2 454	1 224
December	21 200	11 700	32 500	15 200	r5 100	3 910	1 394
<b>2001</b>							
January	32 000	20 400	p53 900	23 200	6 000	4 203	r2 492
February	20 300	15 000	p36 100	15 600	3 800	2 277	1 650

(a) A 'person entry' occurs whenever a visitor enters a National Park. Freycinet data, in particular, reflects repeat entries. Measurement occurs at the designated sites in brackets.

(b) Estimated through a combination of traffic and booth counts.

(c) Estimated through traffic counts.

(d) Number of people taken on a guided tour.

(e) The sum of ferry arrivals and estimated plane passengers.

Source: Tasmanian Parks and Wildlife Service, Department of Primary Industries, Water and Environment.

## 33

### TRACKS IN NATIONAL PARKS, WALKER REGISTRATIONS(a)

	<i>Overland(b)</i>	<i>South Coast(c)</i>	<i>Freycinet(d)</i>	<i>Port Davey(c)</i>	<i>Frenchmans Cap</i>
	<i>no.</i>	<i>no.</i>	<i>no.</i>	<i>no.</i>	<i>no.</i>
<b>1999–2000</b>	7 240	1 011	2 784	272	807
<b>2000</b>					
February	1 209	173	335	34	161
March	1 039	133	317	26	110
April	704	60	282	25	58
May	111	2	39	—	15
June	104	1	65	—	20
July	p33	3	89	2	15
August	p55	—	35	—	5
September	p117	12	163	4	27
October	p146	p14	113	p1	5
November	rp584	rp60	216	p11	41
December rp	1 193	172	489	35	106
<b>2001</b>					
January	rp1 637	p271	695	p44	207
February	p1 385	n.y.a.	414	n.y.a.	n.y.a.

(a) Numbers include only walkers who registered and represented their intention.

(b) Sum of registrations at Cradle Mt and Lake St Clair. Registrations from July 2000 affected by trackhead relocation at Cradle Mt.

(c) Sum of registrations to walk the length of the track in any direction, irrespective of starting point.

(d) All overnight walkers registered in the park.

Source: Tasmanian Parks and Wildlife Service, Department of Primary Industries, Water and Environment.

	Passenger vehicles	Other vehicles(b)	Total(excl. motor cycles)	Vehicles registered by vehicle rental businesses(c)	Motor cycles
	<i>no.</i>	<i>no.</i>	<i>no.</i>	<i>no.</i>	<i>no.</i>
<b>1997-98</b>	13 232	2 740	15 972	2 544	542
<b>1998-99</b>	12 359	2 786	15 145	1 771	568
<b>1999-2000</b>	11 373	3 183	14 556	2 093	563
<b>2000</b>					
January	748	204	952	59	29
February	782	210	992	1	52
March	888	240	1 128	10	44
April	704	233	937	19	41
May	786	340	1 126	3	74
June	665	394	1 059	1	27
July	1 001	204	1 205	81	47
August	1 228	244	1 472	209	70
September	1 313	232	1 545	454	49
October	1 028	213	1 241	213	47
November	1 191	245	1 436	173	82
December	1 827	208	2 035	35	77
<b>2001</b>					
January	827	214	1 041	9	96

(a) Includes State and Commonwealth Government owned motor vehicles and other than those belonging to the defence services. Excludes tractors, plant and equipment, caravans and trailers.

(b) Comprises utilities, panel vans, rigid and articulated trucks and other truck type vehicles (i.e. motor vehicles designed for purposes other than freight carrying, e.g. campervans, tow trucks, ambulances and hearses) and buses.

(c) These figures are included in previous columns.

Source: ABS data available on request from datacube: 9303.0.55.001 New Motor Vehicle Registrations (NMVR), Australia, Main Data.

								Trend	
	Original	Food retailing	Clothing and soft good retailing	Household good retailing	Recreational good retailing	Hospitality and services	Total(d)		
							Change from corresponding month of previous year		
	\$m	\$m	\$m	\$m	\$m	\$m	\$m	%	
<b>1997-98</b>	3 149.4	1 351.1	184.8	320.3	214.2	435.2	3 150.5	..	
<b>1998-99</b>	3 170.1	1 352.9	185.2	338.0	201.1	434.8	3 177.6	..	
<b>1999-2000</b>	3 278.4	1 398.0	163.2	366.4	211.1	475.2	3 254.5	..	
<b>2000</b>									
January	260.9	118.2	13.2	29.7	17.6	41.0	270.9	2.0	
February	257.4	117.8	13.0	30.2	17.6	41.4	270.4	0.8	
March	272.8	117.2	12.8	30.9	17.5	41.4	269.8	-0.2	
April	256.8	114.5	12.8	31.6	17.4	40.7	269.3	-0.9	
May	258.2	114.1	12.9	32.2	17.3	39.5	269.0	-1.2	
June	264.8	114.1	13.2	32.5	17.3	38.2	269.0	-1.2	
July	247.7	115.7	13.2	33.1	17.0	39.7	273.0	0.1	
August	261.6	117.0	13.6	32.9	17.0	38.9	274.1	0.4	
September	264.9	118.7	13.9	32.7	17.1	38.7	275.9	1.0	
October	274.7	120.4	14.1	32.7	17.2	38.8	277.9	1.8	
November	294.1	121.9	14.2	32.8	17.4	39.1	280.1	2.8	
December	372.5	123.2	14.2	32.9	17.6	39.4	282.1	3.9	
<b>2001</b>									
January	281.3	124.2	14.2	33.2	17.8	39.8	283.9	4.8	

(a) Excludes motor vehicles, parts, petrol, etc.

(b) ABS retail seasonally adjusted and trend estimates for earlier periods are revised each month. See Cat. no. 8501.0 for more details.

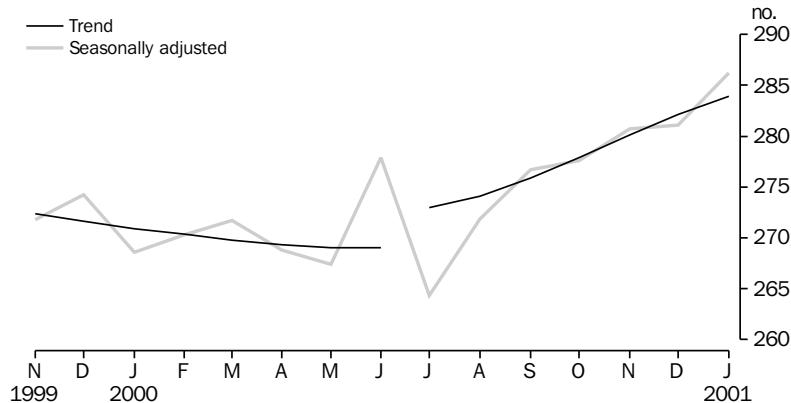
(c) Data from July 2000 reference month onwards are recorded inclusive of GST. See Cat. no. 8501.0 and page 2 of this publication for more details.

A break in the trend series occurred between June and July 2000 because of the impact of The New Tax System on Retail turnover.

(d) Includes Department stores and Other retailing.

Source: Retail Trade, Australia (Cat. no. 8501.0).

#### RETAIL TURNOVER, Tasmania



	Tasmania				Australia				
	Imports	Imports change over preceding period		Exports	Exports change over preceding period		Imports	Exports change over preceding period	
		\$m	%		\$m	%		\$m	%
<b>1997-98</b>	385	-3	2 136	25	90 684	15	87 768	11	
<b>1998-99</b>	407	6	2 019	-5	97 611	8	85 991	-2	
<b>1999-2000</b>	440	8	2 215	10	110 078	13	97 286	13	
<b>2000</b>									
January	35	12	231	40	8 110	-9	6 831	-18	
February	35	0	185	-20	8 653	7	8 233	21	
March	36	3	198	7	9 648	11	8 812	7	
April	33	-7	172	-13	8 004	-17	8 271	-6	
May	58	73	286	67	10 370	30	9 219	11	
June	33	-43	175	-39	10 436	1	9 193	0	
July	47	44	165	-6	9 755	-7	r9 367	2	
August	56	19	181	9	10 716	10	r9 372	0	
September	34	-40	167	-8	9 852	-8	r9 795	4	
October	37	12	197	18	r11 154	13	r10 558	8	
November	59	58	282	43	r11 006	-1	r10 438	-1	
December	55	-7	r220	-22	r9 242	-16	r10 316	-1	
<b>2001</b>									
January	45	-18	191	-13	9 251	0	8 319	-19	

(a) It is difficult to get a complete picture of Tasmania's trade performance as imports recorded by the ABS include only goods imported directly into the State from overseas, and reported by the Australian Customs Service. Many of Tasmania's goods imported for direct consumption, or input into further processing industries, arrive via interstate ports, and are not included in this table.

(b) Includes re-exports

Source: FASTTRACCS

## 37

## MERCHANDISE EXPORTS, BY COUNTRY

	European Community				East Asia				Total all countries
	United States of America	United Kingdom	Total European Community	Japan	Korea	Taiwan	Hong Kong	ASEAN(a)	
<b>1997-98</b>	176 175	25 063	338 791	549 048	67 801	150 405	132 551	399 472	2 136 171
<b>1998-99</b>	235 787	28 691	278 037	466 626	101 177	150 071	152 533	353 441	2 019 182
<b>1999-2000</b>	202 831	19 228	309 082	489 037	133 553	207 233	201 348	383 690	2 214 523
<b>2000</b>									
January	15 158	1 214	76 008	37 408	9 180	16 485	17 086	29 980	230 891
February	21 255	923	11 232	48 466	13 507	18 177	20 529	32 952	185 180
March	14 953	1 559	12 228	37 558	14 667	17 750	22 177	48 051	198 453
April	20 607	2 088	9 102	41 176	10 164	19 499	18 893	32 636	171 716
May	22 716	1 916	71 610	53 803	17 803	29 469	18 987	41 285	286 491
June	19 426	2 096	7 506	48 785	9 826	18 444	17 196	36 131	175 200
July	15 659	4 656	9 294	37 750	9 225	12 890	21 191	r27 769	r165 211
August	20 931	1 692	5 907	48 365	17 824	14 881	20 103	r36 675	r181 452
September	12 890	4 163	10 142	30 647	11 831	r22 416	25 542	r37 850	r166 727
October	24 613	1 391	19 084	44 317	16 749	15 747	9 212	34 823	197 322
November	r12 949	7 233	12 975	44 092	17 672	24 770	21 368	36 413	282 110
December	10 630	4 155	12 724	r70 177	18 206	r14 754	r26 852	31 836	r219 863
<b>2001</b>									
January	19 493	1 216	9 212	44 852	10 193	21 226	28 165	27 376	191 394

(a) ASEAN member countries are: Brunei, Indonesia, Laos, Malaysia, Myanmar, Philippines, Singapore, Thailand and Viet Nam.

Source: FASTTRACCS

	<i>Meat and meat preparations</i>	<i>Dairy products</i>	<i>Fish, crustaceans and molluscs</i>	<i>Vegetables and fruit</i>	<i>Wood and woodchips</i>	<i>Textile fibres and wastes</i>	<i>Metallic ores and metal scrap</i>
	\$'000	\$'000	\$'000	\$'000	\$'000	\$'000	\$'000
<b>1997-98</b>	71 918	133 675	141 205	55 242	311 359	29 641	254 054
<b>1998-99</b>	65 026	102 709	136 268	54 907	296 164	24 999	278 001
<b>1999-2000</b>	88 298	64 573	145 484	44 689	303 340	22 358	242 584
<b>2000</b>							
January	6 296	7 366	11 677	754	32 062	1 460	21 084
February	8 375	5 680	11 507	3 066	31 878	1 812	14 065
March	9 595	7 726	12 692	8 108	26 189	4 519	19 320
April	8 834	6 552	9 400	10 282	35 575	1 772	11 085
May	11 354	9 220	13 722	9 063	32 315	592	26 160
June	7 970	6 579	6 236	4 424	1 344	1 094	21 483
July	6 308	7 649	15 963	4 218	3 836	1 363	r20 737
August	5 830	5 267	15 700	3 506	3 521	534	r12 968
September	4 152	6 875	r16 804	1 408	2 665	2 927	r10 318
October	5 197	10 689	11 135	969	2 551	2 834	23 532
November	7 518	10 720	16 273	354	385	2 092	14 012
December	r7 784	r10 482	21 256	596	5 184	3 258	33 832
<b>2001</b>							
January	9 015	8 595	17 339	887	2 109	1 423	12 862
	<i>Medical and pharmaceutical products</i>	<i>Paper and paperboard</i>	<i>Iron and steel</i>	<i>Non-ferrous metals</i>	<i>Road vehicles and transport equipment</i>	<i>Other and combined confidential items</i>	<i>Total all commodity groups</i>
	\$'000	\$'000	\$'000	\$'000	\$'000	\$'000	\$'000
<b>1997-98</b>	34 755	21 222	76 463	557 126	280 251	169 261	2 136 171
<b>1998-99</b>	52 330	4 130	95 265	544 311	173 015	192 057	2 019 182
<b>1999-2000</b>	67 353	9 932	10 216	681 903	213 836	319 958	2 214 523
<b>2000</b>							
January	3 367	535	169	55 551	72 222	18 347	230 891
February	6 425	1 704	178	68 007	636	31 846	185 180
March	8 343	1 518	321	74 371	1 333	24 418	198 453
April	8 133	773	100	55 293	1 520	22 397	171 716
May	6 711	1 664	694	63 631	64 934	46 429	286 491
June	5 613	596	782	64 109	521	54 450	175 200
July	7 800	377	458	47 490	251	48 760	r165 211
August	10 757	594	234	r61 675	136	60 730	r181452
September	7 097	364	286	62 659	397	50 775	r166 727
October	10 686	228	1 071	61 648	1 017	65 764	197 322
November	12 732	310	237	74 040	89 019	r54 418	r282 110
December	3 576	58	262	74 745	4 585	r54 247	r219 863
<b>2001</b>							
January	8 551	145	275	71 193	1 514	57 488	191 394

Source: FASTTRACCS

	NSW	Vic.	Qld	SA	WA	Tas.	Aust.(a)
<b>Population</b>							
Estimated resident population, June 2000 ('000) p	6 463.5	4 765.9	3 566.4	1 497.6	1 883.9	470.4	19 157.0
Proportion of Australian population, June 2000 (%) p	33.7	24.9	18.6	7.8	9.8	2.5	100.0
Population growth rate, 12 months to June 2000 (%) p	1.0	1.2	1.7	0.4	1.4	-0.1	1.2
<b>Labour force</b>							
Employment growth, 12 months to February 2001 (trend series) (%)							
Males	-0.5	4.8	-0.4	-1.4	0.6	2.2	1.0
Females	1.9	2.7	2.7	0.7	2.9	0.9	2.2
Persons	0.5	3.8	1.0	-0.5	1.6	1.6	1.5
Unemployment rate (trend series), February 2001 (%)	6.1	6.2	8.4	7.4	6.4	9.0	6.8
Unemployment growth, 12 months to February 2001 (trend series) (%)	4.0	-5.8	6.1	-10.8	0.2	0.5	0.7
Participation rate (trend series), February 2001 (%)	62.0	64.0	64.7	60.0	67.0	59.6	63.5
Job vacancy rate, November 2000 (%)	1.7	2.1	1.0	1.0	1.2	1.1	1.6
Working days lost through industrial disputes, 12 months to December 2000 (days per '000 employees)	64	69	64	28	68	7	60
<b>Wages and prices</b>							
Average weekly total earnings, full-time adult employees (trend series) November 2000 (\$)							
Males	957.5	856.7	840.0	861.9	936.0	829.4	900.6
Females	759.9	737.8	688.5	702.9	709.7	677.3	735.7
Persons	883.5	815.6	788.3	803.6	858.2	776.8	840.9
Average weekly total earnings, full-time adult employees, growth (trend), 12 months to Nov '00 (%)	4.6	3.5	6.2	7.1	5.5	4.8	4.9
Consumer price index, all groups, annual growth to December qtr 2000 (%) (b)	6.0	5.9	6.0	5.4	5.0	5.8	5.8
<b>Building</b>							
% change in the number of total dwelling units approved (original),							
— in the 12 months ended January 2001, over the same period previous year	-27.3	-16.9	-13.9	-16.9	-29.3	-10.7	-21.4
— January 2000 to January 2001	-28.0	-38.3	-35.8	-44.8	-37.3	-48.3	-35.3

For footnotes see end of table.

...continued

	NSW	Vic.	Qld	SA	WA	Tas.	Aust.(a)
<b>Private investment and retail trade</b>							
% change in private new capital expenditure, 12 months ended September 2000, over the same period previous year (original)	7.7	-5.0	-3.0	4.9	-24.6	12.5	-4.4
% change in trend estimates turnover of retail establishments, January 2001 (change from corresponding month of the previous year)	6.3	4.0	6.8	7.7	0.7	4.8	5.5
<b>Transport</b>							
% change in number of new motor vehicles (excluding motorcycles) registered in the 12 months ended January 2001, over the same period previous year	0.9	2.4	16.0	0.6	-1.5	2.8	3.5
<b>Agriculture</b>							
% change in the number of livestock slaughtered 12 months ended January 2001 over the same period previous year (original)							
Cattle and calves	-3.7	-3.2	5.2	13.5	-0.4	-10.7	0.5
Sheep and lambs	5.5	14.8	7.7	15.6	14.9	-2.4	11.2
<b>Tourism—room occupancy rates</b>							
Hotels, motels & guest houses, & serviced apartments with facilities, September quarter 2000 (%)	59.7	56.2	61.8	53.5	53.9	37.8	58.4
<b>Australian National and State Accounts</b>							
% change in Domestic (State) Final Demand(c), Chain Volume measures (trend series)							
Sep qtr 2000 to Dec qtr 2000	-0.9	-0.1	-0.2	-0.2	-1.1	-1.2	-0.7
Dec qtr 1999 to Dec qtr 2000	1.0	1.6	1.0	2.0	-3.1	0.6	0.5

(a) Australian totals include the ACT and NT, with the exception of Agriculture, which excludes both.

(b) CPI applies to State capitals.

(c) Total of four types of expenditure: Private investment, Private consumption, Government investment, Government consumption.

	<i>Unit</i>	<i>Greater Hobart and Southern Statistical Divisions</i>	<i>Northern Statistical Division</i>	<i>Mersey-Lyell Statistical Division</i>	<i>Tasmania</i>
<b>Area, at 30 June 1996</b>	km2	25 521	19 935	22 507	67 964
<b>Population</b>					
Estimated resident population, 30 June 1996	no.	230 187	134 047	110 209	474 443
Estimated resident population, 30 June 1999	no.	228 855	133 016	108 390	470 261
Births 1999(a)	no.	2 937	1 717	1 345	6 032
Deaths 1999(a)	no.	1 823	1 111	834	3 783
<b>Labour force (original), February 2001</b>					
Total employed	no.	95 900	63 600	40 600	200 100
Total unemployed	no.	10 100	5 700	5 000	20 800
Unemployment rate	%	9.5	8.2	11.0	9.4
Participation rate	%	58.6	62.3	57.1	59.4
<b>Schools, 1999(b)</b>					
Government	no.	100	57	59	216
Non-government	no.	32	17	16	65
<b>School students, 1999(b)(c)</b>					
Government					
Males	no.	15 529.8	9 254.0	7 867.3	32 651.1
Females	no.	14 785.4	9 291.5	7 650.5	31 727.4
Total	no.	30 315.2	18 545.5	15 517.8	64 378.5
Non-government					
Males	no.	5 866.0	2 474	2 047	10 387.4
Females	no.	6 170.8	2 375.1	1 979.7	10 525.6
Total	no.	12 036.8	4 849.1	4 027.1	20 913.0
<b>Educational qualification, 1996 Census(d)</b>					
Bachelor degree or higher(e)	no.	17 058	7 152	3 908	28 184
Undergraduate diploma	no.	5 893	3 268	2 181	11 374
Associate diploma	no.	3 773	1 902	1 466	7 184
Skilled vocational	no.	16 255	10 040	8 841	35 238
Basic vocational	no.	4 548	2 632	2 305	9 515
<b>Agriculture</b>					
Establishments with agricultural activity, 1998–99 season	no.	1 129	1 583	1 734	4 446
Total area of establishments	ha.	744 493	855 423	327 938	1 927 854
Crops, production, 1998–99 season					
Potatoes	tonnes	7 019	135 661	184 802	327 482
Onions	tonnes	949	13 527	45 996	60 471
Apples	tonnes	46 296	4 847	11 128	62 271
Barley	tonnes	8 180	19 327	2 537	30 044
Livestock, 1998–99 season					
Beef cattle	no.	77 760	191 042	222 641	491 443
Dairy cattle	no.	7 307	84 985	140 630	232 922
Sheep and lambs	no.	1 664 194	1 958 201	178 740	3 801 135
Pigs	no.	2 796	13 289	5 821	21 906
Gross value of agricultural production, 1998–99	\$m	147	249	305	700

For footnotes see end of table.

...continued



	<i>Unit</i>	<i>Greater Hobart and Southern Statistical Divisions</i>	<i>Northern Statistical Division</i>	<i>Mersey-Lyell Statistical Division</i>	<i>Tasmania</i>
<b>Business locations, September 1998</b>					
Locations with manufacturing activity					
Less than 20 employees	no.	424	327	257	1 008
20 or more employees	no.	83	67	48	198
Total	no.	507	394	305	1 206
Locations with retail activity					
Less than 20 employees	no.	2 046	1 346	1 133	4 525
20 or more employees	no.	82	43	35	160
Total	no.	2 128	1 389	1 168	4 685
<b>Building, 1999–2000</b>					
Total dwelling units approved	no.	1 037	537	319	1 893
Value of total residential building approved	\$'000	138 309	66 632	39 163	244 104
Value of total building approved	\$'000	226 094	115 050	63 554	404 699
<b>Dwellings, Census 1996(d)</b>					
Total dwellings	no.	98 815	57 467	45 529	201 820
Occupied private dwellings	no.	85 255	49 759	40 183	175 197
Fully owned	no.	34 338	21 563	18 359	74 260

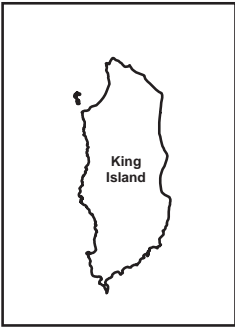
(a) Births and deaths are based on usual residence year of registration. Total Tasmania includes usual residences other than Tasmanian Statistical Divisions.

(b) Source: DETYA and Tasmanian Department of Education.

(c) Full-time equivalent.

(d) Total includes migratory statistical division.

(e) Includes higher degree, postgraduate diploma and bachelor degree.



# Statistical Divisions



Statistical Division NORTHERN

Local Government Area Dorset



Based on ASGC 1996  
 Prepared by: Demography Section, ABS Hobart  
 © Commonwealth of Australia, 1998



## FOR MORE INFORMATION...

- INTERNET* **www.abs.gov.au** the ABS web site is the best place to start for access to summary data from our latest publications, information about the ABS, advice about upcoming releases, our catalogue, and Australia Now—a statistical profile.
- LIBRARY* A range of ABS publications is available from public and tertiary libraries Australia-wide. Contact your nearest library to determine whether it has the ABS statistics you require, or visit our web site for a list of libraries.
- CPI INFOLINE* For current and historical Consumer Price Index data, call 1902 981 074 (call cost 77c per minute).
- DIAL-A-STATISTIC* For the latest figures for National Accounts, Balance of Payments, Labour Force, Average Weekly Earnings, Estimated Resident Population and the Consumer Price Index call 1900 986 400 (call cost 77c per minute).

**INFORMATION SERVICE**

Data which have been published and can be provided within five minutes are free of charge. Our information consultants can also help you to access the full range of ABS information—ABS user-pays services can be tailored to your needs, time frame and budget. Publications may be purchased. Specialists are on hand to help you with analytical or methodological advice.

- PHONE* **1300 135 070**
- EMAIL* **client.services@abs.gov.au**
- FAX* 1300 135 211
- POST* Client Services, ABS, GPO Box 796, Sydney 1041

## WHY NOT SUBSCRIBE?

ABS subscription services provide regular, convenient and prompt deliveries of ABS publications and products as they are released. Email delivery of monthly and quarterly publications is available.

- PHONE* 1300 366 323
- EMAIL* subscriptions@abs.gov.au
- FAX* 03 9615 7848
- POST* Subscription Services, ABS, GPO Box 2796Y, Melbourne 3001



2130360004016  
ISSN 1034-1803

RRP \$20.00